

**TM 11-6940-206-24P**

---

**TECHNICAL MANUAL**

**ORGANIZATIONAL, DIRECT SUPPORT, AND GENERAL  
SUPPORT MAINTENANCE REPAIR PARTS AND SPECIAL  
TOOLS LISTS (INCLUDING DEPOT MAINTENANCE  
REPAIR PARTS AND SPECIAL TOOLS)**

**TRANSMITTING SET, COUNTERMEASURES  
TRAINING SIGNAL AN/ULT-T2  
FSN 6940-856-8176**

---

**HEADQUARTERS, DEPARTMENT OF THE ARMY**

**APRIL 1974**

---

Technical Manual }  
 No. 11-6940-205-24P }

HEADQUARTERS  
 DEPARTMENT OF THE ARMY  
 Washington, D.C., 19 April 1974

**Organizational, Direct Support, and General  
 Support Maintenance Repair Parts and Special  
 Tools Lists (Including Depot Maintenance  
 Repair Parts and Special Tools)  
 TRANSMITTING SET, COUNTERMEASURES  
 TRAINING SIGNAL AN/ULT-T2  
 FSN 6940-856-8176**

*Current as of September 1973*

	Paragraph	Page
Section I.	INTRODUCTION	
	Scope	1-1 3
	General	1-2 3
	Explanation of columns	1-3 3
	Special information	1-4 4.1
	Location of repair parts	1-5 4.1
	Abbreviations (Not applicable)	1-6 4.2
	Reporting of equipment publication improvements	1-7 4.2
II.	PRESCRIBED LOAD ALLOWANCE	
	(Not applicable)	
III.	REPAIR PARTS LIST	6
Group 0001.	Transmitter, Countermeasures Training Signal T883/ULT-T2	6
0002.	Antenna AS-1057/ULT-T2	7
Section IV.	SPECIAL TOOLS, TEST AND SUPPORT EQUIPMENT	
	(Not applicable)	
V.	REPAIR PARTS LIST	8
Group 0001.	Transmitter, Countermeasures Training Signal T-883/ULT-T2	8
0002.	Antenna AS-1057/ULT-T2	26
Section VI.	SPECIAL TOOLS, TEST AND SUPPORT EQUIPMENT	
	(Not applicable)	
VII.	INDEX-FEDERAL STOCK NUMBER AND REFERENCE NUMBER CROSS REFERENCE TO FIGURE AND ITEM NUMBER	2 8

\*This manual supersedes TM 11-6940-205-20P, 11 May 1962 and TM 11-6940-205-35P, 11 May 1962.

## SECTION I INTRODUCTION

### 1-1. Scope

This manual lists repair parts and special tools required for the performance of organizational, direct support, general support, and depot maintenance of the AN/ULT-T2. The PCCN for the AN/ULT-T2 is GEW ABK for all models.

### 1-2. General

This repair parts and special tools list is divided into the following sections:

**a. Prescribed Load Allowance (PLA) - Section II.** Not applicable.

**b. Repair Parts List - Section III.** A list of repair parts authorized for the performance of maintenance at the organizational level. This repair parts list is arranged in alphabetical order.

**c. Special Tools, Test and Support Equipment - Section IV.** Not applicable.

**d. Repair Parts List - Section V.** A list of repair parts authorized for the performance of maintenance at the direct support, general support, and depot level.

**e. Special Tools, Test and Support Equipment - Section VI.** Not applicable.

**f. Index - Federal Stock Number and Reference Number Cross-Reference to Figure and Item Number - Section VII.** A list, in ascending numerical sequence, of all Federal stock numbers appearing in the listings, followed by a list, in alphameric sequence, of all reference numbers appearing in the listings. Federal stock number and reference numbers are cross-referenced to each illustration figure and item number or reference designation appearance.

### 1-3. Explanation of Columns

The following provides an explanation of columns found in the tabular list.

**a. Source, Maintenance, and Recoverability Codes (SMR).**

(1) **Source code.** Indicates the manner of acquiring support items for maintenance, repair, or overhaul of end items. Source codes are -

<i>Code</i>	<i>Explanation</i>
PA-	Item procured and stocked for anticipated or known usage.

<i>Code</i>	<i>Explanation</i>
PB--	Item procured and stocked for insurance purposes because essentiality dictates that a minimum quantity be available in the supply systems.
PC-	Item procured and stocked and which otherwise would be coded PA except that it is deteriorative in nature.
PD-	Support item, excluding support equipment, procured for initial issue or outfitting and stocked only for subsequent or additional initial issues or outfittings. Not subject to automatic replenishment.
PE-	Support equipment procured and stocked for initial issue or outfitting to specified maintenance repair activities.
PF-	Support equipment which will not be stocked but which will be centrally procured on demand.
PG-	Item procured and stocked to provide for sustained support for the life of the equipment. It is applied to an item peculiar to the equipment which because of probable discontinuance or shutdown of production facilities would prove uneconomical to reproduce at a later time.
KD-	An item of depot overhaul/repair kit and not purchased separately. Depot kit defined as a kit that provides items required at the time of overhaul or repair.
KF-	An item of a maintenance kit and not purchased separately. Maintenance kit defined as a kit that provides an item that can be replaced at organizational or direct support or general support levels of maintenance.
KB-	Item included in both a depot overhaul/repair kit and a maintenance kit.
MC-	Item to be manufactured or fabricated at organizational level.
MF-	Item to be manufactured or fabricated at direct support maintenance level.
MH-	Item to be manufactured or fabricated at general support maintenance level.
MD-	Item to be manufactured or fabricated at depot maintenance level.
AO-	Item to be assembled at organizational level.
AF-	Item to be assembled at direct support maintenance level.
AH-	Item to be assembled at general support maintenance level.

Code	<i>Explanation</i>
AD-	Item to be assembled at depot maintenance level.
XA-	Item is not procured or stocked because the requirements for the item will result in the replacement of the next higher assembly.
XB-	Item is not procured or stocked. If not available through salvage, requisition.
XC-	Installation drawing, diagram instruction sheet, field service drawing, that is identified by manufacturers' part number.
XD-	Support items can be requisitioned with justification.

NOTE

Cannibalization or salvage may be used as a source of supply for any items source coded above except those coded XA and aircraft support items as restricted by AR 700-42.

(2) Maintenance code. Maintenance codes are assigned to indicate the levels of maintenance authorized to USE and REPAIR support items. The maintenance codes are entered in the third and fourth positions of the Uniform SMR Code Format as follows -

(a) Use (third position). The maintenance code entered in the third position indicates the lowest maintenance level authorized to remove, replace, and use the support item. The maintenance code entered in the third position indicates one of the following levels of maintenance.

Code	<i>Application/Explanation</i>
C-	Support item is removed, replaced, used at the organizational level of maintenance.

NOTE

A code "C" may be used in this position to denote crew or operator maintenance performed within organizational maintenance.

F-	Support item is removed, replaced, used at the direct support maintenance level.
H-	Support item is removed, replaced, used at the general support maintenance.
D-	Support items that are removed, replaced, used at depot only.

**(b) Repair (fourth position).** The maintenance code entered in the fourth position indicates whether the item is to be repaired and identifies the lowest maintenance level with the capability to perform complete repair (i.e., all authorized maintenance functions). When a maintenance code is not used a dash

(-) sign is entered. For multi-service equipment/systems or when a code is entered, this position will contain one of the following maintenance codes as assigned by the service(s) that require the code -

Code	<i>Application/Explanation</i>
O---	The lowest maintenance level capable of complete repair of the support item is the organizational level.
F-	The lowest maintenance level capable of complete repair of the support item is direct support.
H-	The lowest maintenance level capable of complete repair of the support item is general support.
D-	The lowest maintenance level capable of complete repair of the support item is the depot level.
L-	Repair restricted to designated Specialized Repair Activity.
Z-	Non-repairable. No repair is authorized.
EL-	No repair is authorized. The item may be reconditioned by adjusting, lubricating, etc., at the user level. No parts or special tools are procured for the maintenance of this item.

(3) Recoverability code. Recoverability codes are assigned to support items to indicate the disposition action on unserviceable items. The recoverability code is entered in the fifth position of the uniform SMR Code Format as follows -

Code	<i>Explanation</i>
Z-	Nonrepairable item. When unserviceable, condemn and dispose at the level indicated in the first digit of the maintenance code.
O-	Repairable item. When uneconomically repairable, condemn and dispose at organizational level.
F-	Repairable item. When uneconomically repairable, condemn and dispose at the direct support level.
H-	Repairable item. When uneconomically repairable, condemn and dispose at the general support level.
D-	Repairable item. When beyond lower level repair capability, return to depot. Condemnation and disposal not authorized below depot level.
L-	Repairable item. Repair, condemnation, and disposal not authorized below depot/Specialized Repair Activity level.
A-	Item requires special handling or condemnation procedures because of specific reasons (i.e., precious metal content, high dollar value, critical material or hazardous material).

**b. Federal Stock Number.** Indicates the Federal stock number assigned to the item and will be used for requisitioning purposes.



**c. Description.** Indicates the Federal item name and a minimum description required to identify the item. The last line indicates the reference number followed by the applicable Federal Supply Code for Manufacturer (FSCM) in parentheses. The FSCM is used as an element in item identification to designate manufacturer or distributor or Government agency, etc., and is identified in SB 708-42.

**d. Unit of Measure (U/M).** Indicates the standard or basic quantity by which the listed item is used in performing the actual maintenance function. This measure is expressed by a two-character alphabetical abbreviation; e.g., ea, in, pr, etc., and is the basis used to indicate quantities and allowances in subsequent columns. When the unit of measure differs from the unit of issue, the lowest unit of issue that will satisfy the required units of measure will be requisitioned.

**e. Quantity Incorporated in Unit.** This column indicates the quantity of the item used in the equipment. Subsequent appearances of the same item in the same assembly are indicated by the letters "REF".

**f. 15-Day Organizational Maintenance Allowances.**

(1) The repair parts indicated by an asterisk in the allowance column represent those authorized for use at the organizational category, and will be requisitioned on an "as required" basis, until stockage is based on demand in accordance with AR 710-2.

(2) Major Army commanders are authorized to approve reduction in the range of support items authorized for use in units within their commands. Recommendations for increase in range of items authorized for use will be forwarded to Commander, US Army Electronics Command, ATTN: AMSEL-MA-SMV, Fort Monmouth, N.J., 07703.

(3) Allowance quantities are indicated in the special tools list section for special tools, TMDE, and other support equipment.

**g. 50-Day DS/GS Maintenance Allowances.**

**NOTE**

Allowances in GS column are for GS maintenance only.

(1) The repair parts indicated by asterisk entries in separate allowance columns for DS and GS represent those authorized for use at that category of maintenance to be requisitioned on an "as required" basis, until stockage is based on demand in accordance with AR 710-2.

(2) Allowance quantities are indicated in the special tool lists section for special tools, TMDE, and other support equipment.

**h. 1-Year Allowances Per 100 Equipments/Contingency Planning Purposes.** Column intentionally left blank.

**i. Depot Maintenance Allowance Per 100 Equipments.** This column indicates opposite the first appearance of each item the total quantity authorized for depot maintenance of 100 equipments.

**j. Illustration.**

**(1) Figure number.** Indicates the figure number of the illustration on which the item is shown in TM 11-6940-205-15.

**(2) Item number.** Indicates the item number or reference designation used to reference the item in the illustration.

**1-4. Special Information**

a. Usable on codes are included in column 3. Uncoded items are applicable to all models. Identification of the usable on codes used in this publication are -

Code AØG	Used on AN/ULT-T2
-------------	----------------------

**b.** The following publication pertains to the AN/ULT-T2 and its components:

TM 11-6940-205-15 Operator's, Organizational, Field and Depot Maintenance:  
Trainer Radar AN/ULT-T2.

**1-5. Location of Repair Parts**

**a.** This manual contains one cross-reference index (sec VII) to be used to locate a repair part when either the Federal stock number or reference number (manufacturer's part number) is known. The first column in the index is prepared in numerical or alphanumeric sequence in ascending order. The reference numbers (manufacturer's part numbers) are listed immediately following the last listed Federal stock number in the index of Federal stock numbers.

**b.** When the Federal stock number or reference number is known, follow the procedures given in (1) and (2) below.

(1) Refer to the index of Federal stock numbers (see VII), and locate the Federal stock number or reference number. The FSN and reference number are cross-referenced to the applicable figure and item number or reference designation.

(2) Refer to the repair parts list (sec III and V) and locate the figure number (col 7a-20P, 10a-34P) and item number, or reference designation (col 7b-20P, 10b-34P) as noted in the FSN index.

**c.** When the figure and item number or reference designation are known, scrutinize columns 7a and

TM 11-6940-205-24P

7b-20P and 10a and 10b-34P, of the repair parts list (sec III and V) until the item is located.

d. When the FSN, reference number, figure number, and item number are not known, scrutinize column 3 of the repair parts list (sec III and V), which is arranged in alphabetical order.

#### **1-6. Abbreviations**

Not applicable.

#### **1-7. Reporting of Equipment Publication Improvements**

The reporting of errors, omissions, and recommendations for improving this publication by the individual user is encouraged. Reports should be submitted on DA Form 2028 (Recommended Changes to Publications and Blank Forma) and forwarded direct to Commander, US Army Electronics Command, ATTN: AMSEL-MA-SMV, Fort Monmouth, N.J., 07703.

**(Next printed page is 6)**

SECTION 11#

SWK CODE	(2) FEDERAL STOCK NUMBER	(3) DESCRIPTION REFERENCE NUMBER & MFR CODE USABLE ON CODE	(4) UNIT OF MEAS	(5) QTY. INC IN UNIT	(6) 15-DAY ORGANIZATIONAL MAINTENANCE ALW				(7) ILLUSTRATION	
					(a)	(b)	(c)	(d)	(a)	(b)
					1-5	6-20	21-50	51-100	FIGURE NO.	ITEM NO.
PAQZZ	5960-503-4880	ELECTRON TUBE V209..... 6A2WA (81349)	EA	1	*	*	*	*	10-7	V209
PAQZZ	5960-262-1703	ELECTRON TUBE V401 FIG NO 10-13..... 5R4WA (81349)	EA	1	*	*	*	*		V401
PAQZZ	5960-542-7004	ELECTRON TUBE V206..... 6A6WA (81349)	EA	1	*	*	*	*	10-7	V206
PAQZZ	5960-262-0152	ELECTRON TUBE V101 FIG NO 10-10..... 6A6WA (81349)	EA	6	*	*	*	*		V101
PAQZZ	5960-262-0152	ELECTRON TUBE V102 FIG NO 10-10..... 6A6WA (81349)	EA	REF	*	*	*	*		V102
PAQZZ	5960-262-0152	ELECTRON TUBE V202..... 6A6WA (81349)	EA	REF	*	*	*	*	10-7	V202
PAQZZ	5960-262-0152	ELECTRON TUBE V205..... 6A6WA (81349)	EA	REF	*	*	*	*	10-7	V205
PAQZZ	5960-262-0152	ELECTRON TUBE V302..... 6A6WA (81349)	EA	REF	*	*	*	*	10-9	V302
PAQZZ	5960-262-0152	ELECTRON TUBE V305..... 6A6WA (81349)	EA	REF	*	*	*	*	10-9	V305
PAQZZ	5960-108-0263	ELECTRON TUBE V201..... 6D4 (81349)	EA	1	*	*	*	*	10-7	V201
PAQZZ	5960-262-0161	ELECTRON TUBE V406 FIG NO 10-13..... 6L6WB (81349)	EA	1	*	*	*	*		V406
PAQZZ	5960-272-9182	ELECTRON TUBE V404 FIG NO 10-13..... 6X4WA (81349)	EA	2	*	*	*	*		V404
PAQZZ	5960-272-9182	ELECTRON TUBE V405 FIG NO 10-13..... 6X4WA (81349)	EA	REF	*	*	*	*		V405
PAQZZ	5960-262-0167	ELECTRON TUBE V204..... 12AT7WA (81349)	EA	2	*	*	*	*	10-7	V204
PAQZZ	5960-262-0167	ELECTRON TUBE V304..... 12AT7WA (81349)	EA	REF	*	*	*	*	10-9	V304
PAQZZ	5960-262-0286	ELECTRON TUBE V408 FIG NO 10-13..... 5651WA (81349)	EA	1	*	*	*	*		V408
PAQZZ	5960-062-0204	ELECTRON TUBE V403 FIG NO 10-13..... 5751WA (81349)	EA	2	*	*	*	*		V403
PAQZZ	5960-068-0204	ELECTRON TUBE V407 FIG NO 10-13..... 5751WA (81349)	EA	REF	*	*	*	*		V407
PAQZZ	5960-262-0210	ELECTRON TUBE V203..... 5814A (81349)	EA	3	*	*	*	*	10-7	V203
PAQZZ	5960-262-0210	ELECTRON TUBE V208..... 5814A (81349)	EA	REF	*	*	*	*		V208
PAQZZ	5960-262-0210	ELECTRON TUBE V210..... 5814A (81349)	EA	REF	*	*	*	*	10-7	V210
PAQZZ	5960-669-6861	ELECTRON TUBE V103 FIG NO 10-10..... 6005-6A05E (81349)	EA	2	*	*	*	*		V103
PAQZZ	5960-669-6861	ELECTRON TUBE V207..... 6005-6A05H (81349)	EA	REF	*	*	*	*	10-7	V207
PAQZZ	5960-543-1001	ELECTRON TUBE V402 FIG NO 10-13..... 6080WA (81349)	EA	2	*	*	*	*		V402
PAQZZ	5960-543-1001	ELECTRON TUBE V410 FIG NO 10-13..... 6080WA (81349)	EA	REF	*	*	*	*		V410
PAQZZ	5960-557-6780	ELECTRON TUBE V211..... 6100-6C4WA (81349)	EA	4	*	*	*	*	10-7	V211
PAQZZ	5960-557-6780	ELECTRON TUBE V301..... 6100-6C4WA (81349)	EA	REF	*	*	*	*	10-9	V301
PAQZZ	5960-557-6780	ELECTRON TUBE V303..... 6100-6C4WA (81349)	EA	REF	*	*	*	*	10-9	V303
PAQZZ	5960-557-6780	ELECTRON TUBE V306..... 6100-6C4WA (81349)	EA	REF	*	*	*	*	10-9	V306
PACZZ	5920-583-8486	FUSE, CARTRIDGE F401 FIG NO 10-19..... F03G3R00B (81349)	EA	6	*	*	*	*		F401
PACZZ	5920-583-8486	FUSE, CARTRIDGE F402 FIG NO 10-19..... F03G3R00B (81349)	EA	REF	*	*	*	*		F402
PACZZ	5920-583-8486	FUSE, CARTRIDGE F403 FIG NO 10-19..... F03G3R00B (81349)	EA	REF	*	*	*	*		F403
PACZZ	5920-583-8486	FUSE, CARTRIDGE F404..... F03G3R00B (81349)	EA	REF	*	*	*	*		F404
PACZZ	5920-583-8486	FUSE, CARTRIDGE F405..... F03G3R00B (81349)	EA	REF	*	*	*	*		F405
PACZZ	5920-583-8486	FUSE, CARTRIDGE F406..... F03G3R00B (81349)	EA	REF	*	*	*	*		F406
PAQZZ	5355-616-9604	KNOB NO-REF-DESIG..... MS91528-1P2B (96906)	EA	5	*	*	*	*		
PAQZZ	5355-579-6390	KNOB NO-REF-DESIG..... MS91528-2F2B (96906)	EA	5	*	*	*	*		
PAQZZ	5355-579-1210	KNOB NO-REF-DESIG..... MS91528-3F2B (96906)	EA	1	*	*	*	*		
PACZZ	6240-223-9100	LAMP, GLOW I402..... NE51 (81349)	EA	1	*	*	*	*		I402
PACZZ	6240-155-8706	LAMP, INCANDESCENT I401..... MS15571-2 (96906)	EA	1	*	*	*	*		I401

SECTION III

TM11-6940-205-24P

(1) SMR CODE	(2) FEDERAL STOCK NUMBER	(3) DESCRIPTION REFERENCE NUMBER & MFR CODE      USABLE ON CODE		(4) UNIT OF MEAS	(5) QT. INC IN UNIT	(6) 15-DAY ORGANIZATIONAL MAINTENANCE ALW				(7) ILLUSTRATION	
						(a)	(b)	(c)	(d)	(a)	(b)
						1-5	6-20	21-50	51-100	FIGURE NO.	ITEM NO.
PAOZZ	5960-885-5859	RETAINER, ELECTRON TUBE NO-REF-DESIG.....	NO-REF-DESIG.....	EA	3	*	*	*	*		
		R1448-3021-1 (92071)									
PAOZZ	5960-852-0486	RETAINER, ELECTRON TUBE NO-REF-DESIG.....	NO-REF-DESIG.....	EA	1	*	*	*	*		
		R1448-3021-4 (92071)									
PAOZZ	5960-280-8214	SHIELD, ELECTRON TUBE E102.....	E102.....	EA	12	*	*	*	*		E102
		TS102U02 (81349)									
PAOZZ	5960-280-8214	SHIELD, ELECTRON TUBE E103.....	E103.....	EA	REF	*	*	*	*		E103
		TS102U02 (81349)									
PAOZZ	5960-280-8214	SHIELD, ELECTRON TUBE E202.....	E202.....	EA	REF	*	*	*	*		E202
		TS102U02 (81349)									
PAOZZ	5960-280-8214	SHIELD, ELECTRON TUBE E205.....	E205.....	EA	REF	*	*	*	*		E205
		TS102U02 (81349)									
PAOZZ	5960-280-8214	SHIELD, ELECTRON TUBE E206.....	E206.....	EA	REF	*	*	*	*		E206
		TS102U02 (81349)									
PAOZZ	5960-280-8214	SHIELD, ELECTRON TUBE E211.....	E211.....	EA	REF	*	*	*	*		E211
		TS102U02 (81349)									
PAOZZ	5960-280-8214	SHIELD, ELECTRON TUBE E301.....	E301.....	EA	REF	*	*	*	*		E301
		TS102U02 (81349)									
PAOZZ	5960-280-8214	SHIELD, ELECTRON TUBE E302.....	E302.....	EA	REF	*	*	*	*		E302
		TS102U02 (81349)									
PAOZZ	5960-280-8214	SHIELD, ELECTRON TUBE E303.....	E303.....	EA	REF	*	*	*	*		E303
		TS102U02 (81349)									
PAOZZ	5960-280-8214	SHIELD, ELECTRON TUBE E305.....	E305.....	EA	REF	*	*	*	*		E305
		TS102J02 (81349)									
PAOZZ	5960-280-8214	SHIELD, ELECTRON TUBE E306.....	E306.....	EA	REF	*	*	*	*		E306
		TS102U02 (81349)									
PAOZZ	5960-280-8214	SHIELD, ELECTRON TUBE E408.....	E408.....	EA	REF	*	*	*	*		E408
		TS102U02 (81349)									
PAOZZ	5960-646-4615	SHIELD, ELECTRON TUBE E101.....	E101.....	EA	5	*	*	*	*		E101
		TS102U03 (81349)									
PAOZZ	5960-646-4615	SHIELD, ELECTRON TUBE E207.....	E207.....	EA	REF	*	*	*	*		E207
		TS102U03 (81349)									
PAOZZ	5460-646-4615	SHIELD, ELECTRON TUBE E209.....	E209.....	EA	REF	*	*	*	*		E209
		TS102U03 (81349)									
PAOZZ	5960-646-4615	SHIELD, ELECTRON TUBE E403.....	E403.....	EA	REF	*	*	*	*		E403
		TS102U03 (81349)									
PAOZZ	5960-646-4615	SHIELD, ELECTRON TUBE E407.....	E407.....	EA	REF	*	*	*	*		E407
		TS102U03 (81349)									
PAOZZ	5960-264-3004	SHIELD, ELECTRON TUBE E203.....	E203.....	EA	5	*	*	*	*		E203
		TS103U02 (81349)									
PAOZZ	5960-264-3004	SHIELD, ELECTRON TUBE E204.....	E204.....	EA	REF	*	*	*	*		E204
		TS103U02 (81349)									
PAOZZ	5960-264-3004	SHIELD, ELECTRON TUBE E208.....	E208.....	EA	REF	*	*	*	*		E208
		TS103U02 (81349)									
PAOZZ	5964-264-3004	SHIELD, ELECTRON TUBE E210.....	E210.....	EA	REF	*	*	*	*		E210
		TS103U02 (81349)									
PAOZZ	5960-264-3004	SHIELD, ELECTRON TUBE E304.....	E304.....	EA	REF	*	*	*	*		E304
		TS103U02 (81349)									
PAOZZ	5960-519-9834	SHIELD, ELECTRON TUBE NO-REF-DESIG.....	NO-REF-DESIG.....	EA	1	*	*	*	*		
		TS103U03 (81349)									
		GROUP 0002 ANTENNA AS-1057/ULT-T2, 6940-473-5284									
PAOZZ	6940-605-5295	ADAPTER, COAXIAL-TO-WAVEGUIDE NO-REF-DESIG.....	NO-REF-DESIG.....	EA	1	*	*	*	*		
		A102092 (82199)									
PAOZZ	4730-319-0660	CLAMP, HOSE NO-REF-DESIG 1-1/16 IN TO 2 IN ID.	1-1/16 IN TO 2 IN ID.	EA	1	*	*	*	*		
		Q5200M245 (08484)									
PAOHD	5985-837-1108	HORN, WAVEGUIDE NO-REF-DESIG.....	NO-REF-DESIG.....	EA	1	*	*	*	*		
		A132549 (82199)									
PAOZZ	5970-713-0235	INSERT, INSULATOR NO-REF-DESIG NYLON.....	NO-REF-DESIG NYLON.....	EA	1	*	*	*	*		
		A28422 (82199)									
PAOZZ	5315-838-7597	PIN, STRAIGHT, HEADLESS NO-REF-DESIG NYLON....	NO-REF-DESIG NYLON....	EA	1	*	*	*	*		
		A28423 (82199)									
PAOZZ	5340-837-1755	ROD END, INTERNALLY THREADED NO-REF-DESIG.....	NO-REF-DESIG.....	EA	3	*	*	*	*		
		NYLON 2 27/32 IN LG O/A									
		A26800 (82199)									
PAOZZ	5340-837-1756	ROD END, INTERNALLY THREADED NO-REF-DESIG.....	NO-REF-DESIG.....	EA	3	*	*	*	*		
		NYLON 9-17/32 IN LG O/A									
		B26801 (82199)									
PAOZZ	5305-838-6141	SCREW, EXTERNALLY RELIEVED BODY NO-REF-DESIG...	NO-REF-DESIG...	EA	1	*	*	*	*		
		HORN POST SUPPORT TEFLON									
		AP15556 (82199)									
PAOZZ	5305-838-6142	SCREW, EXTERNALLY RELIEVED BODY NO-REF-DESIG...	NO-REF-DESIG...	EA	3	*	*	*	*		
		ROD AND HORN SUPPORT NYLON									
		A26733-2 (82199)									
PAOZZ	5305-838-7610	SETScrew NO-REF-DESIG NYLON.....	NO-REF-DESIG NYLON.....	EA	3	*	*	*	*		
		A27779 (82199)									
PAOZZ	5985-605-5328	SPREADER, ANTENNA NO-REF-DESIG NYLON.....	NO-REF-DESIG NYLON.....	EA	1	*	*	*	*		
		A28424 (82199)									
PAOZZ	5305-823-5706	THUMB SCREW NO-REF-DESIG.....	NO-REF-DESIG.....	EA	1	*	*	*	*		
		A100885 (82199)									

## SECTION V

TM11-6940-205-24P

(1) SMR CODE	(2) FEDERAL STOCK NUMBER	(3) DESCRIPTION REFERENCE NUMBER & MFR. CODE USABLE ON CODE	(4) UNIT OF MEAS	(5) QTY INC IN UNIT	(6) 30-DAY DS MAINT ALLOWANCE			(7) 30-DAY GS MAINT ALLOWANCE			(8) 1-YR ALW PER 100 EQUIP CNTGCT	(9) DEPOT MAINT ALW PER 100 EQUIP	(10) ILLUSTRATION	
					(a)	(b)	(c)	(a)	(b)	(c)			(a)	(b)
					1-20	21-50	51-100	1-20	21-50	51-100			FIGURE NO.	ITEM NO.
PAFZZ	6145-295-0851	CABLE, POWER, ELECTRICAL NO-REF-DESIG.... CO-03HOF3-14-C56P O (81349)	FT	25	*	*	*	*	*	*		5		
PAFZZ	6145-170-7837	CABLE, RADIO FREQUENCY NO-REF-DESIG..... RG98U (81349)	FT	10	*	*	*	*	*	*		5		
PAFZZ	6145-161-0916	CABLE, RADIO FREQUENCY NO-REF-DESIG..... RG718U (81349)	FT	1	*	*	*	*	*	*		5		
PAFZZ	5935-577-8776	CONNECTOR, PLUG, ELECTRICAL P310 FIG NO. 10-16 UG21EU (81349)	EA	2	*	*	*	*	*	*		3		P310
PAFZZ	5935-577-8776	CONNECTOR, PLUG, ELECTRICAL P801..... UG21EU (81349)	EA	REF	*	*	*	*	*	*		3		P801
PAFZZ	5935-149-5358	CONNECTOR, PLUG, ELECTRICAL R312..... UG203U (81349)	EA	1	*	*	*	*	*	*		3	10-8	R312
PAFZZ	5935-173-5895	CONNECTOR, PLUG, ELECTRICAL NO-REF-DESIG. UG2608U (81349)	EA	2	*	*	*	*	*	*		3		
PAFZZ	5935-201-3867	CONNECTOR, PLUG, ELECTRICAL NO-REF-DESIG. 5264 (74545)	EA	1	*	*	*	*	*	*		3		
PAFZZ	5935-149-3666	CONNECTOR, PLUG, ELECTRICAL NO-REF-DESIG. 7555 (74545)	EA	1	*	*	*	*	*	*		3		
GROUP 0001 TRANSMITTER, COUNTERMEASURES TRAINING SIGNAL T-883/ULT-T2														
PAFZZ	5961-186-7764	ADAPTER, CRYSTAL XCR501 FIG NO 10-15.... UG119UP (81349)	EA	1	*	*	*	*	*	*		4		
PAFZZ	6625-852-0482	AMMETER M301 FIG NO 10-16..... R1448-3001 (92071)	EA	1	*	*	*	*	*	*		3		M301
PAFZZ	6145-161-0913	CABLE, RADIO FREQUENCY NO-REF-DESIG..... RG62U (81349)	FT	6	*	*	*	*	*	*		5		
PAFZZ	5910-280-7401	CAPACITOR, FIXED, CERAMIC DIELECTRIC C221 CK63Y103Z (81349)	EA	4	*	*	*	*	*	*		3	10-7	C221
PAFZZ	5910-280-7401	CAPACITOR, FIXED, CERAMIC DIELECTRIC C308 CK63Y103Z (81349)	EA	REF	*	*	*	*	*	*		3	10-8	C308
PAFZZ	5910-280-7401	CAPACITOR, FIXED, CERAMIC DIELECTRIC C312 CK63Y103Z (81349)	EA	REF	*	*	*	*	*	*		3	10-8	C312
PAFZZ	5910-280-7401	CAPACITOR, FIXED, CERAMIC DIELECTRIC C314 FIG NO 10-19 CK63Y103Z (81349)	EA	REF	*	*	*	*	*	*		3		C314
PAFZZ	5910-683-3337	CAPACITOR, FIXED, ELECTROLYTIC C403 FIG. NO 10-13 CE41C100Q (81349)	EA	2	*	*	*	*	*	*		3		C403
PAFZZ	5910-683-3337	CAPACITOR, FIXED, ELECTROLYTIC C408 FIG. NO 10-12 CE41C100Q (81349)	EA	REF	*	*	*	*	*	*		3		C408
PAFZZ	5910-577-1159	CAPACITOR, FIXED, ELECTROLYTIC C401 FIG. NO 10-12 CE41C250Q (81349)	EA	2	*	*	*	*	*	*		3		C401
PAFZZ	5910-577-1159	CAPACITOR, FIXED, ELECTROLYTIC C407 FIG. NO 10-12 CE41C250Q (81349)	EA	REF	*	*	*	*	*	*		3		C407
PAFZZ	5910-184-3838	CAPACITOR, FIXED, ELECTROLYTIC C412 FIG. NO 10-12 CE41C500Q (81349)	EA	2	*	*	*	*	*	*		3		C412

(1) SWR CODE	(2) FEDERAL STOCK NUMBER	(3) DESCRIPTION REFERENCE NUMBER & MFR CODE USABLE CN CODE	(4) UNIT OF MEAS	(5) QTY INC INH UNIT	(6) 30-DAY CS MAINT ALLOWANCE			(7) 30-DAY CS MAINT ALLOWANCE			(8) 1 YR ALW PER 100 EQUIP CNTRCT	(9) DEPOT MAINT ALW PER 100 EQUIP	(10) ILLUSTRATION	
					(a)	(b)	(c)	(a)	(b)	(c)			(a)	(b)
					1-20	21-50	51-100	1-20	21-50	51-100			FIGURE NO	ITEM NO
PAFZZ	5910-184-3838	CAPACITOR, FIXED, ELECTROLYTIC C413 FIG. NO 10-12 CE41C500Q (81349)	EA	REF	*	*	*	*	*	*		3		C413
PAFZZ	5910-983-7295	CAPACITOR, FIXED, MICA DIELECTRIC C214... CM20B300J (81349)	EA	1	*	*	*	*	*	*		3	10-7	C214
PAFZZ	5910-850-0541	CAPACITOR, FIXED, MICA DIELECTRIC C219... CM20B470K (81349)	EA	1	*	*	*	*	*	*		3	10-7	C219
PAFZZ	5910-100-8108	CAPACITOR, FIXED, MICA DIELECTRIC C311... CM20B600J (81349)	EA	1	*	*	*	*	*	*		3	10-8	C311
PAFZZ	5910-983-7295	CAPACITOR, FIXED, MICA DIELECTRIC C101... FIG NO 10-11 CM20B101J (81349)	EA	2	*	*	*	*	*	*		3		C101
PAFZZ	5910-483-7295	CAPACITOR, FIXED, MICA DIELECTRIC C213... CM20B101J (81349)	EA	REF	*	*	*	*	*	*		3	10-7	C213
PAFZZ	5910-101-5417	CAPACITOR, FIXED, MICA DIELECTRIC C104... FIG NO 10-11 CM20B101K (81349)	EA	2	*	*	*	*	*	*		3		C104
PAFZZ	5910-101-5617	CAPACITOR, FIXED, MICA DIELECTRIC C108... FIG NO 10-11 CM20B101K (81349)	EA	REF	*	*	*	*	*	*		3		C108
PAFZZ	5910-666-7091	CAPACITOR, FIXED, MICA DIELECTRIC C209... CM20B151J (81349)	EA	2	*	*	*	*	*	*		3	10-7	C209
PAFZZ	5910-444-7091	CAPACITOR, FIXED, MICA DIELECTRIC C206... CM20B151J (81349)	EA	REF	*	*	*	*	*	*		3	10-7	C206
PAFZZ	5910-100-0077	CAPACITOR, FIXED, MICA DIELECTRIC C224... CM30B821J (81349)	EA	1	*	*	*	*	*	*		3	10-7	C224
PAFZZ	5910-184-2697	CAPACITOR, FIXED, MICA DIELECTRIC C215... CM35B472J (81349)	EA	1	*	*	*	*	*	*		3	10-7	C215
PAFZZ	5910-666-6779	CAPACITOR, FIXED, MICA DIELECTRIC C207... CM35B912J (81349)	EA	2	*	*	*	*	*	*		3	10-7	C207
PAFZZ	5910-666-6779	CAPACITOR, FIXED, MICA DIELECTRIC C208... CM35B912J (81349)	EA	REF	*	*	*	*	*	*		3	10-7	C208
PAFZZ	5910-879-1875	CAPACITOR, FIXED, MICA DIELECTRIC C107... FIG NO 10-11 CM37B103J (81349)	EA	1	*	*	*	*	*	*		3		C107
PAFZZ	5910-644-6161	CAPACITOR, FIXED, PAPER DIELECTRIC C223... CPO5A1KF223K (81349)	EA	1	*	*	*	*	*	*		3	10-7	C223
PAFZZ	5910-644-3576	CAPACITOR, FIXED, PAPER DIELECTRIC C304... FIG NO 10-16 CPO5A1EC104K (81349)	EA	1	*	*	*	*	*	*		3		C304
PAFZZ	5910-644-0689	CAPACITOR, FIXED, PAPER DIELECTRIC C105... FIG NO 10-11 CPO5A1EF104K (81349)	EA	2	*	*	*	*	*	*		3		C105
PAFZZ	5910-644-0689	CAPACITOR, FIXED, PAPER DIELECTRIC C109... FIG NO 10-11 CPO5A1EF104K (81349)	EA	REF	*	*	*	*	*	*		3		C109
PAFZZ	5910-543-9502	CAPACITOR, FIXED, PAPER DIELECTRIC C303... CPO5A1EF104K (81349)	EA	1	*	*	*	*	*	*		3	10-8	C303
PAFZZ	5910-636-1655	CAPACITOR, FIXED, PAPER DIELECTRIC C102... FIG NO 10-11 CPO9A1EF103K (81349)	EA	1	*	*	*	*	*	*		3		C102
PAFZZ	5910-815-6881	CAPACITOR, FIXED, PAPER DIELECTRIC C411... CONTINUED	EA	1	*	*	*	*	*	*		3		C411

(1) SWR CODE	(2) FEDERAL STOCK NUMBER	(3) DESCRIPTION REFERENCE NUMBER & NFR CODE	(4) UNIT OF MEAS	(5) QTY INC OR UNIT	(6) 30-DAY GS MAINT ALLOWANCE			(7) 30-DAY CS MAINT ALLOWANCE			(8) 1-YR ALLW PER EQUIP CATG	(9) DEPOT ALLW PER EQUIP	(10) ILLUSTRATION	
					(a)	(b)	(c)	(a)	(b)	(c)			(a)	(b)
					1-20	21-50	51-100	1-20	21-50	51-100			FIGURE NO.	ITEM NO.
		CONTINUED												
PAFZZ	5910-062-3950	FIG NO 10-14 CP09A1E227K (81349) CAPACITOR, FIXED, PAPER DIELECTRIC C202..	EA	2	*	*	*	*	*	*		3	10-7	C202
PAFZZ	5910-062-3950	CP10A1EF104K (81349) CAPACITOR, FIXED, PAPER DIELECTRIC C204..	EA	REF	*	*	*	*	*	*		3	10-7	C204
PAFZZ	5910-643-8575	CP10A1EF134M (81349) CAPACITOR, FIXED, PAPER DIELECTRIC C402..	EA	3	*	*	*	*	*	*		3		C402
PAFZZ	5910-643-8575	FIG NO 10-14 CP10A1EE474K (81349) CAPACITOR, FIXED, PAPER DIELECTRIC C406..	EA	REF	*	*	*	*	*	*		3		C406
PAFZZ	5910-643-8575	FIG NO 10-19 CP10A1EE474K (81349) CAPACITOR, FIXED, PAPER DIELECTRIC C415..	EA	REF	*	*	*	*	*	*		3		C415
PAFZZ	5910-465-0337	FIG NO 10-19 CP10A1EE474K (81349) CAPACITOR, FIXED, PAPER DIELECTRIC C103..	EA	2	*	*	*	*	*	*		3		C103
PAFZZ	5910-465-0337	FIG NO 10-11 CP11A1EF104K (81349) CAPACITOR, FIXED, PAPER DIELECTRIC C106..	EA	REF	*	*	*	*	*	*		3		C106
PAFZZ	5910-688-3224	FIG NO 10-11 CP11A1EF104K (81349) CAPACITOR, FIXED, PAPER DIELECTRIC C216..	EA	1	*	*	*	*	*	*		3	10-7	C216
PAFZZ	5910-617-4042	CP11A3EF104K (81349) CAPACITOR, FIXED, PAPER DIELECTRIC C205..	EA	1	*	*	*	*	*	*		3	10-7	C205
PAFZZ	5910-655-0588	CP11A3EE104M (81349) CAPACITOR, FIXED, PAPER DIELECTRIC C203..	EA	1	*	*	*	*	*	*		3	10-7	C203
PAFZZ	5910-129-9237	CP11A3EE105M (81349) CAPACITOR, FIXED, PAPER DIELECTRIC C301..	EA	2	*	*	*	*	*	*		3	10-8	C301
PAFZZ	5910-129-9237	CP41B1FF405K (81349) CAPACITOR, FIXED, PAPER DIELECTRIC C302..	EA	REF	*	*	*	*	*	*		3	10-8	C302
PAFZZ	5910-170-2779	CP41B1FF405K (81349) CAPACITOR, FIXED, PAPER DIELECTRIC C110..	EA	1	*	*	*	*	*	*		3		C110
PAFZZ	5910-196-2533	FIG NO 10-11 CP55B1EF504K (81349) CAPACITOR, FIXED, PAPER DIELECTRIC C212..	EA	1	*	*	*	*	*	*		3	10-7	C212
PAFZZ	5910-852-8211	CP41B1EF501V (81349) CAPACITOR, FIXED, PAPER DIELECTRIC C201..	EA	2	*	*	*	*	*	*		3	10-7	C201
PAFZZ	5910-852-8211	CP61B1EF254M (81349) CAPACITOR, FIXED, PAPER DIELECTRIC C210..	EA	REF	*	*	*	*	*	*		3	10-7	C210
PAFZZ	5910-683-0054	CP61B1EF254M (81349) CAPACITOR, FIXED, PAPER DIELECTRIC C220..	EA	1	*	*	*	*	*	*		3	10-7	C220
PAFZZ	5910-112-7431	CP61B1EF504M (81349) CAPACITOR, FIXED, PAPER DIELECTRIC C211..	EA	1	*	*	*	*	*	*		3	10-7	C211
PAFZZ	5910-126-1611	CP70B1EF205K (81349) CAPACITOR, VARIABLE, CERAMIC DIELECTRIC... C218	EA	1	*	*	*	*	*	*		3	10-7	C218
PAFZZ	5910-578-1623	CV11A120 (81349) CAPACITOR, VARIABLE, CERAMIC DIELECTRIC... C217	EA	2	*	*	*	*	*	*		3	10-7	C217
PAFZZ	5910-578-1623	CV11C450 (81349) CAPACITOR, VARIABLE, CERAMIC DIELECTRIC... C309	EA	REF	*	*	*	*	*	*		3	10-8	C309
		CONTINUED												

(1) PART CODE	(2) FEDERAL STOCK NUMBER	(3) DESCRIPTION REFERENCE NUMBER UNIT CODE USABLE ON CODE	(4) UNIT TYPE	(5) QTY INC UNIT	(6) 30 DAY ES MAINT ALLOWANCE			(7) 30 DAY ES MAINT ALLOWANCE			(8) ALL PERS FOO CONTR	(9) MAINT FOO CONTR	(10) REQUISITION	
					(a)	(b)	(c)	(a)	(b)	(c)			(a)	(b)
					1-20	21-30	31-100	1-20	21-30	31-100			REQ	INSTR
(CONTINUED)														
PAF 22	5985-149-4415	COMMERCIAL CARP. ELECTRICAL WIRE MS 240 10-1 (96906)	EA	1	*	*	*	*	*	*			3	P 201
PAF 22	5935-607-1467	COMMERCIAL CARP. ELECTRICAL WIRE MS 240 10-1 (96906)	EA	1	*	*	*	*	*	*			3	U-2 P 406
PAF 22	5935-614-0534	COMMERCIAL CARP. ELECTRICAL WIRE MS 240 10-1 (96906)	EA	1	*	*	*	*	*	*			3	P 403
PAF 22	5935-546-0063	COMMERCIAL CARP. ELECTRICAL WIRE MS 240 10-1 (96906)	EA	1	*	*	*	*	*	*			3	J 603
PAF 22	5935-615-7613	COMMERCIAL CARP. ELECTRICAL WIRE MS 240 10-1 (96906)	EA	1	*	*	*	*	*	*			3	P 403
PAF 22	5935-615-3023	COMMERCIAL CARP. ELECTRICAL WIRE MS 240 10-1 (96906)	EA	1	*	*	*	*	*	*			3	J 204
PAF 22	5965-645-8033	COMMERCIAL CARP. ELECTRICAL WIRE MS 240 22-1 (96906)	EA	1	*	*	*	*	*	*			3	U-7 P 204
PAF 22	5095-688-4261	COMMERCIAL CARP. ELECTRICAL WIRE MS 240 22-1 (96906)	EA	1	*	*	*	*	*	*			3	
PAF 22	5935-657-2600	COMMERCIAL CARP. ELECTRICAL WIRE MS 240 22-1 (96906)	EA	1	*	*	*	*	*	*			3	J 604
PAF 22	5935-741-0045	COMMERCIAL CARP. ELECTRICAL WIRE MS 240 22-1 (96906)	EA	1	*	*	*	*	*	*			3	P 404
PAF 22	9535-255-6981	COMMERCIAL CARP. ELECTRICAL WIRE MS 240 22-1 (96906)	EA	1	*	*	*	*	*	*			3	P 303
PAF 22	5935-686-0435	COMMERCIAL CARP. ELECTRICAL WIRE MS 240 22-1 (96906)	EA	1	*	*	*	*	*	*			3	P 302
PAF 22	5935-295-5356	COMMERCIAL CARP. ELECTRICAL WIRE MS 240 22-1 (96906)	EA	1	*	*	*	*	*	*			3	
PAF 22	5935-259-4443	COMMERCIAL CARP. ELECTRICAL WIRE MS 240 22-1 (96906)	EA	1	*	*	*	*	*	*			3	P 302
PAF 22	5935-201-7256	COMMERCIAL CARP. ELECTRICAL WIRE MS 240 22-1 (96906)	EA	1	*	*	*	*	*	*			3	J 200
PAF 22	5935-173-5895	COMMERCIAL CARP. ELECTRICAL WIRE MS 240 22-1 (96906)	EA	1	*	*	*	*	*	*			3	P 203
PAF 22	5935-173-5895	COMMERCIAL CARP. ELECTRICAL WIRE MS 240 22-1 (96906)	EA	1	*	*	*	*	*	*			3	P 202
PAF 22	5935-173-5895	COMMERCIAL CARP. ELECTRICAL WIRE MS 240 22-1 (96906)	EA	1	*	*	*	*	*	*			3	P 204
PAF 22	5935-173-5895	COMMERCIAL CARP. ELECTRICAL WIRE MS 240 22-1 (96906)	EA	1	*	*	*	*	*	*			3	P 205



(1) NAF CODE	(2) FEDERAL STOCK NUMBER	(3) DESCRIPTION REFERENCE NUMBER & WFR CODE USABLE ON CODE		(4) UNIT BY MEAS	(5) QTY IN UNIT	(6) 30 DAY DISMANT ALLOWANCE			(7) 30 DAY CS MANT ALLOWANCE			(8) N Y R ALL PER 100 CONTCY	(9) QTY PER 100 ALL PER 100	(10) ILLUSTRATION		
						(a)	(b)	(c)	(a)	(b)	(c)			(a)	(b)	
						1-20	21-50	51-100	1-20	21-50	51-100			FIG NO	ITEM NO	
		CONTINUED														
PAF22	5935-173-5855	UG2600U (01349)	CONNECTOR, PLUG, ELECTRICAL	FIG NO	EA	REF	*	*	*	*	*	*		3		8306
PAF22	5940-549-6224	UG2600U (01349)	CONNECTOR, PLUG, ELECTRICAL	E307	EA	REF	*	*	*	*	*	*		3		8307
PAF22	5940-549-6224	UG2600U (01349)	CONNECTOR, PLUG, ELECTRICAL	E308	EA	REF	*	*	*	*	*	*		3		8308
PAF22	5940-549-6224	UG2600U (01349)	CONNECTOR, PLUG, ELECTRICAL	E313	EA	REF	*	*	*	*	*	*		3		8313
PAF22	5940-549-6224	UG2600U (01349)	CONNECTOR, PLUG, ELECTRICAL	E312	EA	REF	*	*	*	*	*	*		3		8312
PAF22	5935-614-0533	UG2600U (01349)	CONNECTOR, RECEPTACLE, ELECTRICAL	J101	EA	REF	*	*	*	*	*	*		3		J101
PAF22	5935-023-0632	MS24003-1 (96906)	CONNECTOR, RECEPTACLE, ELECTRICAL	J301	EA	REF	*	*	*	*	*	*		3		J301
PAF22	5935-874-5065	MS24023-1 (96906)	CONNECTOR, RECEPTACLE, ELECTRICAL	J405	EA	REF	*	*	*	*	*	*		3		J405
PAF22	5935-871-5064	MS24023-1 (96906)	CONNECTOR, RECEPTACLE, ELECTRICAL	J303	EA	REF	*	*	*	*	*	*		3		J303
PAF22	5935-169-4146	MS24023-1 (96906)	CONNECTOR, RECEPTACLE, ELECTRICAL	J304	EA	REF	*	*	*	*	*	*		3		J304
PAF22	5935-280-2928	UG625U (01349)	CONNECTOR, RECEPTACLE, ELECTRICAL	J306	EA	REF	*	*	*	*	*	*		3		J306
PAF22	5935-280-2928	UG625U (01349)	CONNECTOR, RECEPTACLE, ELECTRICAL	J308	EA	REF	*	*	*	*	*	*		3		J308
PAF22	5935-665-5718	UG625U (01349)	CONNECTOR, RECEPTACLE, ELECTRICAL	J202	EA	REF	*	*	*	*	*	*		3		J202
PAF22	5935-665-5718	UG1094U (01349)	CONNECTOR, RECEPTACLE, ELECTRICAL	J203	EA	REF	*	*	*	*	*	*		3		J203
PAF22	5935-665-5718	UG1094U (01349)	CONNECTOR, RECEPTACLE, ELECTRICAL	J302	EA	REF	*	*	*	*	*	*		3	10-9	J302
PAF22	5935-665-5718	UG1094U (01349)	CONNECTOR, RECEPTACLE, ELECTRICAL	J303	EA	REF	*	*	*	*	*	*		3	10-9	J303
PAF22	5935-665-5718	UG1094U (01349)	CONNECTOR, RECEPTACLE, ELECTRICAL	J304	EA	REF	*	*	*	*	*	*		3	10-9	J304
PAF22	5935-665-5718	UG1094U (01349)	CONNECTOR, RECEPTACLE, ELECTRICAL	J305	EA	REF	*	*	*	*	*	*		3	10-9	J305
PAF22	5935-687-1929	UG1094U (01349)	CONNECTOR, RECEPTACLE, ELECTRICAL	J406	EA	REF	*	*	*	*	*	*		3		J406
PAF22	5935-871-5027	R1448-3016 (92071)	CONNECTOR, ELECTRICAL	A305	EA	REF	*	*	*	*	*	*		3		A305

(1)	(2)	(3)	(4)	(5)	(6)			(7)			(8)	(9)	(10)			
					30 DAY MAXIMUM ALLOWANCE			30 DAY MAXIMUM ALLOWANCE					ALLOWANCE PER UNIT	MAXIMUM ALLOWANCE PER UNIT	REMARKS	
					(a)	(b)	(c)	(d)	(e)	(f)					(g)	(h)
PAQZ	6040-871-3330	COMBAT (011349)	EA	1	*	*	*	*	*	*		2	6311			
PAQZ	5960-503-4880	EL EC TRONIC EQUIP (011349)	EA	1	*	*	*	*	*	*		100	10-7	V207		
PAQZ	5960-188-1625	EL EC TRONIC EQUIP (011349)	EA	1	*	*	*	*	*	*		100		V307		
PAQZ	5960-282-1703	EL EC TRONIC EQUIP (011349)	EA	1	*	*	*	*	*	*		100		V401		
PAQZ	5960-542-7446	EL EC TRONIC EQUIP (011349)	EA	1	*	*	*	*	*	*		100	10-7	V206		
PAQZ	5960-262-0152	EL EC TRONIC EQUIP (011349)	EA	6	*	*	*	*	*	*		100		V101		
PAQZ	59600-262-0152	EL EC TRONIC EQUIP (011349)	EA	RIF	*	*	*	*	*	*		100		V102		
PAQZ	5960-262-0152	EL EC TRONIC EQUIP (011349)	EA	RIF	*	*	*	*	*	*		100	10-7	V202		
PAQZ	5960-262-0152	EL EC TRONIC EQUIP (011349)	EA	RIF	*	*	*	*	*	*		100	10-7	V205		
PAQZ	5960-262-0152	EL EC TRONIC EQUIP (011349)	EA	RIF	*	*	*	*	*	*		100	10-9	V302		
PAQZ	5960-262-0152	EL EC TRONIC EQUIP (011349)	EA	RIF	*	*	*	*	*	*		100	10-9	V305		
PAQZ	5960-108-0263	EL EC TRONIC EQUIP (011349)	EA	1	*	*	*	*	*	*		100	10-7	V201		
PAQZ	5960-262-0464	EL EC TRONIC EQUIP (011349)	EA	1	*	*	*	*	*	*		100		V406		
PAQZ	5960-272-9182	EL EC TRONIC EQUIP (011349)	EA	2	*	*	*	*	*	*		100		V406		
PAQZ	5960-272-9182	EL EC TRONIC EQUIP (011349)	EA	RIF	*	*	*	*	*	*		100		V405		
PAQZ	5960-262-0167	EL EC TRONIC EQUIP (011349)	EA	2	*	*	*	*	*	*		100	10-7	V206		
PAQZ	5960-262-0167	EL EC TRONIC EQUIP (011349)	EA	RIF	*	*	*	*	*	*		100	10-9	V306		
PAQZ	5960-262-0286	EL EC TRONIC EQUIP (011349)	EA	1	*	*	*	*	*	*		100		V403		
PAQZ	5960-062-0204	EL EC TRONIC EQUIP (011349)	EA	2	*	*	*	*	*	*		100		V403		
PAQZ	5960-062-0204	EL EC TRONIC EQUIP (011349)	EA	RIF	*	*	*	*	*	*		100		V407		
PAQZ	5960-262-0210	EL EC TRONIC EQUIP (011349)	EA	3	*	*	*	*	*	*		100	10-7	V203		
PAQZ	5960-262-0210	EL EC TRONIC EQUIP (011349)	EA	RIF	*	*	*	*	*	*		100		V201		
PAQZ	5960-262-0210	EL EC TRONIC EQUIP (011349)	EA	RIF	*	*	*	*	*	*		100	10-7	V210		
PAQZ	5960-664-6861	EL EC TRONIC EQUIP (011349)	EA	2	*	*	*	*	*	*		100		V103		
PAQZ	5960-669-6861	EL EC TRONIC EQUIP (011349)	EA	RIF	*	*	*	*	*	*		100	10-7	V207		
PAQZ	5960-543-1001	EL EC TRONIC EQUIP (011349)	EA	2	*	*	*	*	*	*		100		V402		

(1) PART CODE	(2) FEDERAL STOCK NUMBER	(3) DESCRIPTION REFERENCE NUMBER & PART CODE USABLE OR CODE	(4) UNIT QTY MGRS	(5) QTY IN UNIT	(6) 2D DATA DIS MOUNT ALLOWANCE			(7) 3D DATA DIS MOUNT ALLOWANCE			(8) P. A. R. ITEM GENERAL	(9) QTY IN UNIT	(10) CLASSIFICATION			
					(6a) B 2D	(6b) 2D 5D	(6c) 5D 10D	(7a) B 3D	(7b) 3D 5D	(7c) 5D 10D			CLASS ITEM	QTY IN UNIT	CLASS ITEM	QTY IN UNIT
PACZZ	5960-543-1001	ELECT. CIRCUIT RIBBON W/400 FIG NO 10-19..... (81349)	EA	REF	*	*	*	*	*	*		100		46 100		
PACZZ	5960-557-6780	ELECT. CIRCUIT RIBBON W/211..... (81349)	EA	REF	*	*	*	*	*	*		100	10-1	42 111		
PACZZ	5960-557-6780	ELECT. CIRCUIT RIBBON W/301..... (81349)	EA	REF	*	*	*	*	*	*		100	10-9	43 011		
PACZZ	5960-557-6780	ELECT. CIRCUIT RIBBON W/302..... (81349)	EA	REF	*	*	*	*	*	*		100	10-9	43 021		
PACZZ	5960-557-6780	ELECT. CIRCUIT RIBBON W/303..... (81349)	EA	REF	*	*	*	*	*	*		100	10-9	43 031		
PACZZ	5920-583-8486	FUSE, CARTRIDGE F401 FIG NO 10-19..... (81349)	EA	REF	*	*	*	*	*	*		5		44 011		
PACZZ	5920-583-8486	FUSE, CARTRIDGE F402 FIG NO 10-19..... (81349)	EA	REF	*	*	*	*	*	*		5		44 021		
PACZZ	5920-583-8486	FUSE, CARTRIDGE F403 FIG NO 10-19..... (81349)	EA	REF	*	*	*	*	*	*		5		44 031		
PACZZ	5920-583-8486	FUSE, CARTRIDGE F404..... (81349)	EA	REF	*	*	*	*	*	*		5		44 041		
PACZZ	5920-583-8486	FUSE, CARTRIDGE F405..... (81349)	EA	REF	*	*	*	*	*	*		5		44 051		
PACZZ	5920-583-8486	FUSE, CARTRIDGE F406..... (81349)	EA	REF	*	*	*	*	*	*		5		44 061		
PAFZZ	5920-285-0755	FUSEHOLDER XF01 FIG NO 10-19..... (81349)	EA	REF	*	*	*	*	*	*		3				
PAFZZ	5920-285-0755	FUSEHOLDER XF02 FIG NO 10-19..... (81349)	EA	REF	*	*	*	*	*	*		3				
PAFZZ	5920-285-0755	FUSEHOLDER XF03 FIG NO 10-19..... (81349)	EA	REF	*	*	*	*	*	*		3				
PAFZZ	5920-285-0755	FUSEHOLDER XF04..... (81349)	EA	REF	*	*	*	*	*	*		3				
PAFZZ	5920-285-0755	FUSEHOLDER XF05..... (81349)	EA	REF	*	*	*	*	*	*		3				
PCFZZ	5325-291-9366	GROMMET, RUBBER NO-REF-DESIG..... MS35489-11 (96906)	EA	REF	*	*	*	*	*	*		5				
PCFZZ	5325-281-1557	GROMMET, RUBBER NO-REF-DESIG..... MS35489-17 (96906)	EA	REF	*	*	*	*	*	*		5				
PCFZZ	5325-174-9038	GROMMET, RUBBER NO-REF-DESIG..... MS35489-20 (96906)	EA	REF	*	*	*	*	*	*		5				
PCFZZ	5325-185-6003	GROMMET, RUBBER NO-REF-DESIG..... MS35489-42 (96906)	EA	REF	*	*	*	*	*	*		5				
PAFZZ	4520-875-1213	HEATER, SPACE, ELECTRIC HR401 FIG NO 10-19..... R1448-2202 (92071)	EA	REF	*	*	*	*	*	*		5				
PAFZZ	4140-864-7747	IMPELLER, FAN NO-REF-DESIG..... Q-520-4 (100657)	EA	REF	*	*	*	*	*	*		5				
PAHZZ	5970-871-3434	INSULATOR, STANDOFF NO-REF-DESIG..... R1448-2108 (92071)	EA	REF	*	*	*	*	*	*		2				
PAHZZ	5970-871-3435	INSULATOR, STANDOFF E312..... R1448-2109 (92071)	EA	REF	*	*	*	*	*	*		2		E312		
PAFZZ	5935-192-4787	JACK, TELEPHONE J102 FIG NO 10-19..... J1009 (81349)	EA	REF	*	*	*	*	*	*		2		J102		

(1) SWR CODE	(2) FEDERAL STOCK NUMBER	(3) DESCRIPTION REFERENCE NUMBER & MFR. CODE USABLE ON CODE	(4) UNIT OF MEAS	(5) QTY INC UNIT	(6) 30 DAY DIS MOUNT ALLOWANCE			(7) 30 DAY CS MOUNT ALLOWANCE			(8) 1-YR ALL PER EQUIP CONTCY	(9) DISPOT MOUNT ALL PER EQUIP	(10) ILLUSTRATION	
					(a)	(b)	(c)	(a)	(b)	(c)			(a)	(b)
					1-20	21-50	51-100	1-20	21-50	51-100			FIGURE NO.	ITEM NO.
PAFZZ	59025-530-2045	JACK, BIP J306..... MCS 10100-2 (96906)	EA	9	*	*	*	*	*	*		2	10-9	J306
PAFZZ	59025-530-2045	JACK, BIP J305..... MCS 10100-2 (96906)	EA	REF	*	*	*	*	*	*		2	10-9	J305
PAFZZ	59025-530-2045	JACK, BIP J306 FIG NO 10-16..... MCS 10100-2 (96906)	EA	REF	*	*	*	*	*	*		2	10-9	J306
PAFZZ	59025-530-2045	JACK, BIP J307..... MCS 10100-2 (96906)	EA	REF	*	*	*	*	*	*		2	10-9	J307
PAFZZ	59025-530-2045	JACK, BIP J318..... MCS 10100-2 (96906)	EA	REF	*	*	*	*	*	*		2	10-9	J318
PAFZZ	59025-530-2045	JACK, BIP J308 FIG NO 10-16..... MCS 10100-2 (96906)	EA	REF	*	*	*	*	*	*		2	10-9	J308
PAFZZ	59025-530-2045	JACK, BIP J401 FIG NO 10-13..... MCS 10100-2 (96906)	EA	REF	*	*	*	*	*	*		2	10-9	J401
PAFZZ	59025-530-2045	JACK, BIP J402 FIG NO 10-13..... MCS 10100-2 (96906)	EA	REF	*	*	*	*	*	*		2	10-9	J402
PAQZZ	59025-540-9009	MCS 101520-1R20 (96906)	EA	5	*	*	*	*	*	*		3		
PAQZZ	59025-540-9009	MCS 101520-2R20 (96906)	EA	5	*	*	*	*	*	*		3		
PAQZZ	59025-540-9009	MCS 101520-1R20 (96906)	EA	5	*	*	*	*	*	*		3		
PAQZZ	59025-540-9009	MCS 101520-2R20 (96906)	EA	5	*	*	*	*	*	*		3		
PAQZZ	59025-540-9009	LAMP, GLOW 1402..... MCS 101349	EA	1	*	*	*	*	*	*		20		1402
PAQZZ	59025-540-9009	LAMP, INCANDESCENT 1401..... MCS 101349	EA	1	*	*	*	*	*	*		20		1401
PAFZZ	59025-540-9009	LIGHT, INDICATOR 105401 FIG NO 10-16..... MCS 101349	EA	5	*	*	*	*	*	*		5		
PAFZZ	59025-540-9009	LIGHT, INDICATOR 105402 FIG NO 10-16..... MCS 101349	EA	5	*	*	*	*	*	*		5		
PAFZZ	59025-540-9009	MAGNET, PERMANENT A201..... MCS 101349	EA	4	*	*	*	*	*	*		5		A201
PAFZZ	59025-540-9009	MOTOR, ALTERNATING CURRENT 0401 FIG NO 10-17..... MCS 101349	EA	1	*	*	*	*	*	*		3		0401
PAFZZ	59025-540-9009	PLATE, MOUNTING NO-REF-DESIG..... MCS 101349	EA	1	*	*	*	*	*	*		5		
PAFZZ	59025-540-9009	RELAY, ARMATURE R201..... MCS 101349	EA	1	*	*	*	*	*	*		3	10-7	R201
PAFZZ	59025-540-9009	RESISTOR ASSEMBLY R214..... MCS 101349	EA	1	*	*	*	*	*	*		3		R214
PAFZZ	59025-540-9009	RESISTOR ASSEMBLY R315..... MCS 101349	EA	1	*	*	*	*	*	*		3		R315
PAFZZ	59025-540-9009	RESISTOR ASSEMBLY R220..... MCS 101349	EA	1	*	*	*	*	*	*		3		R220
PAFZZ	59025-540-9009	RESISTOR ASSEMBLY R230..... MCS 101349	EA	1	*	*	*	*	*	*		3		R230
PAFZZ	59025-540-9009	RESISTOR, FIXED, COMPOSITION R339..... MCS 101349	EA	1	*	*	*	*	*	*		3	10-6	R339
PAFZZ	59025-540-9009	RESISTOR, FIXED, COMPOSITION R330..... MCS 101349	EA	1	*	*	*	*	*	*		3	10-6	R330

(1) SWR CODE	(2) FEDERAL STOCK NUMBER	(3) DESCRIPTION REFERENCE NUMBER & AFFR CODE	(4) UNIT OF MEAS	(5) QTY IN UNIT	(6) 30 DAY GS MAINT ALLOWANCE			(7) 30 DAY GS MAINT ALLOWANCE			(8) R-PR ALLN PRFR 100 EQUIP CONTRCT	(9) QTY ALLN PRFR 100 EQUIP CONTRCT	(10) REPLACEMENT	
					(a)	(b)	(c)	(a)	(b)	(c)			(a)	(b)
					1-20	21-50	51-100	1-20	21-50	51-100			10-7	10-8
PAFZZ	5505-192-3973	RESISTOR, FIXED, COMPOSITION RC20GF471K (01349)	R201	EA	1	*	*	*	*	*	*	3	10-7	R201
PAFZZ	5905-171-2005	RESISTOR, FIXED, COMPOSITION RC20GF471K (01349)	R405 FIG NO	EA	4	*	*	*	*	*	*	3		R405
PAFZZ	5905-171-2005	RESISTOR, FIXED, COMPOSITION RC20GF471K (01349)	R406 FIG NO	EA	REF	*	*	*	*	*	*	3		R406
PAFZZ	5905-171-2005	RESISTOR, FIXED, COMPOSITION RC20GF471K (01349)	R416 FIG NO	EA	REF	*	*	*	*	*	*	3		R416
PAFZZ	5905-171-2005	RESISTOR, FIXED, COMPOSITION RC20GF471K (01349)	R418 FIG NO	EA	REF	*	*	*	*	*	*	3		R418
PAFZZ	5905-195-6800	RESISTOR, FIXED, COMPOSITION RC20GF502J (01349)	R230	EA	1	*	*	*	*	*	*	3	10-7	R230
PAFZZ	5905-195-6791	RESISTOR, FIXED, COMPOSITION RC20GF502J (01349)	R239 FIG NO	EA	1	*	*	*	*	*	*	3		R239
PAFZZ	5905-195-4846	RESISTOR, FIXED, COMPOSITION RC20GF502J (01349)	R232	EA	2	*	*	*	*	*	*	3	10-7	R232
PAFZZ	5905-195-6806	RESISTOR, FIXED, COMPOSITION RC20GF502J (01349)	R234	EA	REF	*	*	*	*	*	*	3	10-7	R234
PAFZZ	5905-279-1757	RESISTOR, FIXED, COMPOSITION RC20GF152J (01349)	R248	EA	1	*	*	*	*	*	*	3	10-7	R248
PAFZZ	5905-171-2009	RESISTOR, FIXED, COMPOSITION RC20GF222K (01349)	R213	EA	1	*	*	*	*	*	*	3	10-7	R213
PAFZZ	5905-195-6502	RESISTOR, FIXED, COMPOSITION RC20GF332K (01349)	R247	EA	3	*	*	*	*	*	*	3	10-7	R247
PAFZZ	5905-195-6502	RESISTOR, FIXED, COMPOSITION RC20GF332K (01349)	R272	EA	REF	*	*	*	*	*	*	3	10-7	R272
PAFZZ	5905-195-6502	RESISTOR, FIXED, COMPOSITION RC20GF332K (01349)	R273	EA	REF	*	*	*	*	*	*	3	10-7	R273
PAFZZ	5905-195-6451	RESISTOR, FIXED, COMPOSITION RC20GF472K (01349)	R259	EA	1	*	*	*	*	*	*	3	10-7	R259
PAFZZ	5905-279-2019	RESISTOR, FIXED, COMPOSITION RC20GF512J (01349)	R229	EA	2	*	*	*	*	*	*	3	10-7	R229
PAFZZ	5905-279-2019	RESISTOR, FIXED, COMPOSITION RC20GF512J (01349)	R236	EA	REF	*	*	*	*	*	*	3	10-7	R236
PAFZZ	5905-185-8510	RESISTOR, FIXED, COMPOSITION RC20GF101J (01349)	R318	EA	1	*	*	*	*	*	*	3	10-8	R318
PAFZZ	5905-185-8510	RESISTOR, FIXED, COMPOSITION RC20GF103K (01349)	R425 FIG NO	EA	1	*	*	*	*	*	*	3		R425
PAFZZ	5905-279-3502	RESISTOR, FIXED, COMPOSITION RC20GF121J (01349)	R233	EA	2	*	*	*	*	*	*	3	10-7	R233
PAFZZ	5905-279-3502	RESISTOR, FIXED, COMPOSITION RC20GF125J (01349)	R235	EA	REF	*	*	*	*	*	*	3	10-7	R235
PAFZZ	5905-190-8884	RESISTOR, FIXED, COMPOSITION RC20GF123K (01349)	R304 FIG NO	EA	2	*	*	*	*	*	*	3		R304
PAFZZ	5905-190-8884	RESISTOR, FIXED, COMPOSITION RC20GF123K (01349)	R305	EA	REF	*	*	*	*	*	*	3	10-8	R305

SECTION W

(1) NAF CODE	(2) FEDERAL STOCK NUMBER	(3) DESCRIPTION		(4) UNIT OF MEAS	(5) QTY UNIT	(6) 30 DAY QS MAINT ALLOWANCE			(7) 30 DAY QS MAINT ALLOWANCE			(8) H-RR ALL PER CONTR	(9) DEFQTR MAINT PER	(10) REQUISITION		
						(a)	(b)	(c)	(a)	(b)	(c)			(a)	(b)	
						1-20	21-50	51-100	1-20	21-50	51-100			FIG NO	ITEM NO	
PAFZZ	5905-190-8879	RESISTOR, FIXED, COMPOSITION RC20GF101K (01349)	R303.....	EA	1	*	*	*	*	*	*			3	10-8	R303
PAFZZ	5905-192-0649	RESISTOR, FIXED, COMPOSITION RC20GF203J (01349)	R306.....	EA	1	*	*	*	*	*	*			3	10-8	R306
PAFZZ	5905-186-2987	RESISTOR, FIXED, COMPOSITION RC20GF223K (01349)	R101 FIG NO	EA	2	*	*	*	*	*	*			3		R101
PAFZZ	5905-186-2987	RESISTOR, FIXED, COMPOSITION RC20GF223K (01349)	R106 FIG NO	EA	REF	*	*	*	*	*	*			3		R106
PAFZZ	5905-279-3498	RESISTOR, FIXED, COMPOSITION RC20GF423K (01349)	R226.....	EA	1	*	*	*	*	*	*			3	10-7	R226
PAFZZ	5905-190-8873	RESISTOR, FIXED, COMPOSITION RC20GF433J (01349)	R108 FIG NO	EA	4	*	*	*	*	*	*			3		R108
PAFZZ	5905-190-8873	RESISTOR, FIXED, COMPOSITION RC20GF473K (01349)	R206.....	EA	REF	*	*	*	*	*	*			3	10-7	R206
PAFZZ	5905-190-8873	RESISTOR, FIXED, COMPOSITION RC20GF473K (01349)	R242.....	EA	REF	*	*	*	*	*	*			3	10-7	R242
PAFZZ	5905-190-8873	RESISTOR, FIXED, COMPOSITION RC20GF473K (01349)	R407 FIG NO	EA	REF	*	*	*	*	*	*			3		R407
PAFZZ	5905-279-3496	RESISTOR, FIXED, COMPOSITION RC20GF473K (01349)	R309.....	EA	2	*	*	*	*	*	*			3	10-8	R309
PAFZZ	5905-279-3496	RESISTOR, FIXED, COMPOSITION RC20GF513J (01349)	R310.....	EA	REF	*	*	*	*	*	*			3	10-8	R310
PAFZZ	5905-279-3456	RESISTOR, FIXED, COMPOSITION RC20GF623J (01349)	R210.....	EA	1	*	*	*	*	*	*			3	10-7	R210
PAFZZ	5905-245-3661	RESISTOR, FIXED, COMPOSITION RC20GF603J (01349)	R270.....	EA	1	*	*	*	*	*	*			3	10-7	R270
PAFZZ	5905-254-7087	RESISTOR, FIXED, COMPOSITION RC20GF603K (01349)	R301.....	EA	1	*	*	*	*	*	*			3	10-8	R301
PAFZZ	5905-279-3495	RESISTOR, FIXED, COMPOSITION RC20GF753J (01349)	R103 FIG NO	EA	2	*	*	*	*	*	*			3		R103
PAFZZ	5905-279-3495	RESISTOR, FIXED, COMPOSITION RC20GF753J (01349)	R105 FIG NO	EA	REF	*	*	*	*	*	*			3		R105
PAFZZ	5905-254-7097	RESISTOR, FIXED, COMPOSITION RC20GF823K (01349)	R308.....	EA	1	*	*	*	*	*	*			3	10-8	R308
PAFZZ	5905-192-3987	RESISTOR, FIXED, COMPOSITION RC20GF104K (01349)	R212.....	EA	3	*	*	*	*	*	*			3	10-7	R212
PAFZZ	5905-192-3987	RESISTOR, FIXED, COMPOSITION RC20GF104K (01349)	R220.....	EA	REF	*	*	*	*	*	*			3	10-7	R220
PAFZZ	5905-192-3987	RESISTOR, FIXED, COMPOSITION RC20GF104K (01349)	R330 FIG NO	EA	REF	*	*	*	*	*	*			3		R330
PAFZZ	5905-279-1867	RESISTOR, FIXED, COMPOSITION RC20GF14J (01349)	R267.....	EA	1	*	*	*	*	*	*			3	10-7	R267
PAFZZ	5905-192-3981	RESISTOR, FIXED, COMPOSITION RC20GF124K (01349)	R219.....	EA	1	*	*	*	*	*	*			3	10-7	R219
PAFZZ	5905-249-9468	RESISTOR, FIXED, COMPOSITION	R221 FIG NO	EA	1	*	*	*	*	*	*			3		R221

SEE ITEM #

(1) SAR CODE	(2) FEDERAL STOCK NUMBER	(3) DESCRIPTION REFERENCE NUMBER & MFR. CODE USABLE ON CODE		(4) UNIT QTY	(5) INC IN	(6) 30 DAY GS MAINT ALLOWANCE			(7) 30 DAY GS MAINT ALLOWANCE			(8) ALL W/PER REQ	(9) SUPPORT MATERIAL	(10) REPLACEMENT		
						(a)	(b)	(c)	(a)	(b)	(c)			(a)	(b)	
																1-20
CONTINUED																
PAFZZ	5905-279-2522	RC20GF134J (81349) RESISTOR, FIXED, COMPOSITION	R102 FIG NO	EA	2	*	*	*	*	*	*			3		R102
PAFZZ	5905-279-2522	RC20GF134J (81349) RESISTOR, FIXED, COMPOSITION	R253.....	EA	REF	*	*	*	*	*	*			3	10-7	R253
PAFZZ	5905-192-0662	RC20GF154J (81349) RESISTOR, FIXED, COMPOSITION	R326.....	EA	2	*	*	*	*	*	*			3	10-8	R326
PAFZZ	5905-192-0662	RC20GF184K (81349) RESISTOR, FIXED, COMPOSITION	R325.....	EA	REF	*	*	*	*	*	*			3	10-8	R325
PAFZZ	5905-192-0667	RC20GF184K (81349) RESISTOR, FIXED, COMPOSITION	R412.....	EA	2	*	*	*	*	*	*			3	10-7	R412
PAFZZ	5905-192-0667	RC20GF224J (81349) RESISTOR, FIXED, COMPOSITION	R412 FIG NO	EA	REF	*	*	*	*	*	*			3		R412
PAFZZ	5905-255-3489	RC20GF224J (81349) RESISTOR, FIXED, COMPOSITION	R306.....	EA	3	*	*	*	*	*	*			3	10-8	R306
PAFZZ	5905-255-3489	RC20GF224K (81349) RESISTOR, FIXED, COMPOSITION	R319.....	EA	REF	*	*	*	*	*	*			3	10-8	R319
PAFZZ	5905-255-3489	RC20GF224K (81349) RESISTOR, FIXED, COMPOSITION	R432 FIG NO	EA	REF	*	*	*	*	*	*			3		R432
PAFZZ	5905-249-9491	RC20GF224K (81349) RESISTOR, FIXED, COMPOSITION	R217.....	EA	1	*	*	*	*	*	*			3	10-7	R217
PAFZZ	5905-279-2519	RC20GF274K (81349) RESISTOR, FIXED, COMPOSITION	R250.....	EA	1	*	*	*	*	*	*			3	10-7	R250
PAFZZ	5905-279-2520	RC20GF334J (81349) RESISTOR, FIXED, COMPOSITION	R322.....	EA	1	*	*	*	*	*	*			3	10-8	R322
PAFZZ	5905-279-2518	RC20GF364J (81349) RESISTOR, FIXED, COMPOSITION	R215.....	EA	1	*	*	*	*	*	*			3	10-7	R215
PAFZZ	5905-279-1903	RC20GF434J (81349) RESISTOR, FIXED, COMPOSITION	R413 FIG NO	EA	2	*	*	*	*	*	*			3		R413
PAFZZ	5905-279-1903	RC20GF474J (81349) RESISTOR, FIXED, COMPOSITION	R415 FIG NO	EA	REF	*	*	*	*	*	*			3		R415
PAFZZ	5905-185-6946	RC20GF474J (81349) RESISTOR, FIXED, COMPOSITION	R243.....	EA	1	*	*	*	*	*	*			3	10-7	R243
PAFZZ	5905-279-2516	RC20GF474K (81349) RESISTOR, FIXED, COMPOSITION	R223.....	EA	1	*	*	*	*	*	*			3	10-7	R223
PAFZZ	5905-221-5840	RC20GF314J (81349) RESISTOR, FIXED, COMPOSITION	R274.....	EA	1	*	*	*	*	*	*			3	10-7	R274
PAFZZ	5905-221-5841	RC20GF364K (81349) RESISTOR, FIXED, COMPOSITION	R423 FIG NO	EA	1	*	*	*	*	*	*			3		R423
PAFZZ	5905-221-5842	RC20GF624J (81349) RESISTOR, FIXED, COMPOSITION	R433 FIG NO	EA	1	*	*	*	*	*	*			3		R433
PAFZZ	5905-221-5849	RC20GF684K (81349) RESISTOR, FIXED, COMPOSITION	R249.....	EA	1	*	*	*	*	*	*			3	10-7	R249

(1) PART CODE	(2) FEDERAL STOCK NUMBER	(3) DESCRIPTION REFERENCE NUMBER & PART CODE USABILE ON CODE	(4) UNIT QUANTITY MEAS	(5) UNIT QUANTITY MEAS	(6) 30 DAY USE MAINT ASSEMBLY			(7) 30 DAY USE MAINT ASSEMBLY			(8) ALL PARTS ID	(9) ALL PARTS ID	(10) REPLACEMENT PARTS		
					(a)	(b)	(c)	(a)	(b)	(c)			(a)	(b)	
					1-20	21-50	51-100	1-20	21-50	51-100			1-20	21-50	51-100
PANEE	5905-224-5848	RESISTOR, FIXED, COMPOSITION RC206F024J (01349)	EA	1	*	*	*	*	*	*			3	10-8	RC242
PANEE	5905-192-0390	RESISTOR, FIXED, COMPOSITION RD-19 RC206F105J (01349)	EA	2	*	*	*	*	*	*			3		RC411
PANEE	5905-192-0390	RESISTOR, FIXED, COMPOSITION RD-19 RC206F105J (01349)	EA	REF	*	*	*	*	*	*			3		RC426
PANEE	5905-192-3982	RESISTOR, FIXED, COMPOSITION RC206F105J (01349)	EA	2	*	*	*	*	*	*			3	10-8	RC320
PANEE	5905-192-3982	RESISTOR, FIXED, COMPOSITION RC206F105J (01349)	EA	REF	*	*	*	*	*	*			3	10-8	RC340
PANEE	5905-279-1970	RESISTOR, FIXED, COMPOSITION RC206F105J (01349)	EA	1	*	*	*	*	*	*			3	10-8	RC346
PANEE	5905-190-8874	RESISTOR, FIXED, COMPOSITION RC206F125J (01349)	EA	1	*	*	*	*	*	*			3	10-8	RC343
PANEE	5905-279-2652	RESISTOR, FIXED, COMPOSITION RD-19 RC206F125J (01349)	EA	1	*	*	*	*	*	*			3		RC403
PANEE	5905-279-4872	RESISTOR, FIXED, COMPOSITION RC206F125J (01349)	EA	1	*	*	*	*	*	*			3	10-7	RC246
PANEE	5905-279-1873	RESISTOR, FIXED, COMPOSITION RC206F125J (01349)	EA	1	*	*	*	*	*	*			3	10-7	RC263
PANEE	5905-279-1873	RESISTOR, FIXED, COMPOSITION RC206F125J (01349)	EA	1	*	*	*	*	*	*			3	10-8	RC345
PANEE	5905-295-3403	RESISTOR, FIXED, COMPOSITION RC206F225K (01349)	EA	2	*	*	*	*	*	*			3	10-7	RC222
PANEE	5905-295-3403	RESISTOR, FIXED, COMPOSITION RC206F225K (01349)	EA	REF	*	*	*	*	*	*			3	10-7	RC248
PANEE	5905-279-2512	RESISTOR, FIXED, COMPOSITION RC206F245J (01349)	EA	1	*	*	*	*	*	*			3	10-8	RC328
PANEE	5905-279-1882	RESISTOR, FIXED, COMPOSITION RC206F275K (01349)	EA	1	*	*	*	*	*	*			3	10-8	RC329
PANEE	5905-549-7785	RESISTOR, FIXED, COMPOSITION RD-11 RC206F275K (01349)	EA	2	*	*	*	*	*	*			3		RC106
PANEE	5905-549-7785	RESISTOR, FIXED, COMPOSITION RD-11 RC206F275K (01349)	EA	REF	*	*	*	*	*	*			3		RC111
PANEE	5905-299-2015	RESISTOR, FIXED, COMPOSITION RC206F275J (01349)	EA	1	*	*	*	*	*	*			3	10-7	RC245
PANEE	5905-299-2050	RESISTOR, FIXED, COMPOSITION RC206F275J (01349)	EA	1	*	*	*	*	*	*			3	10-8	RC357
PANEE	5905-299-2019	RESISTOR, FIXED, COMPOSITION RC206F275J (01349)	EA	1	*	*	*	*	*	*			3	10-7	RC267
PANEE	5905-299-2014	RESISTOR, FIXED, COMPOSITION RC206F275J (01349)	EA	1	*	*	*	*	*	*			3	10-7	RC284
PANEE	5905-299-2009	RESISTOR, FIXED, COMPOSITION RC206F275J (01349)	EA	1	*	*	*	*	*	*			3	10-8	RC326
PANEE	5905-332-6463	RESISTOR, FIXED, COMPOSITION RC206F275J (01349)	EA	2	*	*	*	*	*	*			3	10-7	RC209
PANEE	5905-537-6463	RESISTOR, FIXED, COMPOSITION RC206F275J (01349)	EA	REF	*	*	*	*	*	*			3	10-7	RC240



SECTION 4

(1) SMR CODE	(2) FEDERAL STOCK NUMBER	(3) DESCRIPTION REFERENCE NUMBER & MFR CODE USABLE ON CODE	(4) UNIT OF MEAS	(5) QTY IN UNIT	(6) 30-DAY GS MAINT ALLOWANCE			(7) 30-DAY CS MAINT ALLOWANCE			(8) D-Y-R ALLW PERM EQUIP CMTY	(9) D-Y-R ALLW PERM EQUIP	(10) ILLUSTRATION	
					(a)	(b)	(c)	(a)	(b)	(c)			(a)	(b)
					R-20	Z1-50	S1-100	R-20	Z1-50	S1-100			FIG NO	ITEM NO
PAFEE	5905-479-2597	RESISTOR, FIXED, COMPOSITION RC42GF104K (01349)	EA	1	*	*	*	*	*	*		3	R426	
PAFEE	5905-299-1983	RESISTOR, FIXED, COMPOSITION RC42GF104K (01349)	EA	1	*	*	*	*	*	*		3	R449	
PAFEE	5905-279-4320	RESISTOR, FIXED, COMPOSITION RC42GF104K (01349)	EA	1	*	*	*	*	*	*		3	R430	
PAFEE	5905-279-1747	RESISTOR, FIXED, COMPOSITION RC42GF104K (01349)	EA	2	*	*	*	*	*	*		3	R422	
PAFEE	5905-279-1747	RESISTOR, FIXED, COMPOSITION RC42GF270J (01349)	EA	REF	*	*	*	*	*	*		3	R430	
PAFEE	5905-279-1925	RESISTOR, FIXED, COMPOSITION RC42GF270J (01349)	EA	2	*	*	*	*	*	*		3	R400	
PAFEE	5905-279-1925	RESISTOR, FIXED, COMPOSITION RC42GF270K (01349)	EA	REF	*	*	*	*	*	*		3	R400	
PAFEE	5905-254-0411	RESISTOR, FIXED, COMPOSITION RC42GF270K (01349)	EA	1	*	*	*	*	*	*		3	R107	
PAFEE	5905-195-6814	RESISTOR, FIXED, COMPOSITION RC42GF102K (01349)	EA	1	*	*	*	*	*	*		3	R390	
PAFEE	5905-279-1949	RESISTOR, FIXED, COMPOSITION RC42GF102J (01349)	EA	1	*	*	*	*	*	*		3	10-7 R255	
PAFEE	5905-256-8355	RESISTOR, FIXED, COMPOSITION RC42GF202J (01349)	EA	1	*	*	*	*	*	*		3	10-7 R257	
PAFEE	5905-195-6748	RESISTOR, FIXED, COMPOSITION RC42GF332K (01349)	EA	2	*	*	*	*	*	*		3	10-7 R202	
PAFEE	5905-195-6748	RESISTOR, FIXED, COMPOSITION RC42GF332K (01349)	EA	REF	*	*	*	*	*	*		3	10-7 R203	
PAFEE	5905-257-0926	RESISTOR, FIXED, COMPOSITION RC42GF332J (01349)	EA	3	*	*	*	*	*	*		3	10-7 R264	
PAFEE	5905-257-0926	RESISTOR, FIXED, COMPOSITION RC42GF332J (01349)	EA	REF	*	*	*	*	*	*		3	10-7 R265	
PAFEE	5905-257-0926	RESISTOR, FIXED, COMPOSITION RC42GF332J (01349)	EA	REF	*	*	*	*	*	*		3	10-7 R266	
PAFEE	5905-195-6750	RESISTOR, FIXED, COMPOSITION RC42GF362J (01349)	EA	1	*	*	*	*	*	*		3	10-7 R256	
PAFEE	5905-279-3504	RESISTOR, FIXED, COMPOSITION RC42GF472J (01349)	EA	1	*	*	*	*	*	*		3	10-7 R252	
PAFEE	5905-195-6449	RESISTOR, FIXED, COMPOSITION RC42GF472K (01349)	EA	1	*	*	*	*	*	*		3	R420	
PAFEE	5905-279-2528	RESISTOR, FIXED, COMPOSITION RC42GF602J (01349)	EA	1	*	*	*	*	*	*		3	10-8 R344	
PAFEE	5905-279-2295	RESISTOR, FIXED, COMPOSITION RC42GF602K (01349)	EA	2	*	*	*	*	*	*		3	10-7 R204	
PAFEE	5905-279-2295	RESISTOR, FIXED, COMPOSITION RC42GF602K (01349)	EA	REF	*	*	*	*	*	*		3	10-7 R205	

(1) SAR CODE	(2) FEDERAL STOCK NUMBER	(3) DESCRIPTION REFERENCE NUMBER & MFR CODE    USABLE ON CODE		(4) UNIT OF MEAS	(5) QTY INC IN UNIT	(6) 30 DAY GS MAINT ALLOWANCE			(7) 30 DAY GS MAINT ALLOWANCE			(8) 1-YR EQUIP CONTCY	(9) DEPOT ALLW PER EQUIP	(10) ILLUSTRATION	
						(a)	(b)	(c)	(a)	(b)	(c)			(a)	(b)
						1-20	21-50	51-100	1-20	21-50	51-100			FIGURE NO.	ITEM NO.
PAFZZ	5905-249-4198	RESISTOR, FIXED, COMPOSITION RC42GF42K (81349)	R201.....	EA	1	*	*	*	*	*	*		3	10-7	R201
PAFZZ	5905-185-8521	RESISTOR, FIXED, COMPOSITION RC42GF42K (81349)	R109 FIG NO 10-11	EA	1	*	*	*	*	*	*		3		R109
PAFZZ	5905-185-8516	RESISTOR, FIXED, COMPOSITION RC42GF10K (81349)	R254.....	EA	2	*	*	*	*	*	*		3	10-7	R254
PAFZZ	5905-185-8516	RESISTOR, FIXED, COMPOSITION RC42GF10K (81349)	R260.....	EA	REF	*	*	*	*	*	*		3	10-7	R260
PAFZZ	5905-245-4227	RESISTOR, FIXED, COMPOSITION RC42GF10K (81349)	R246.....	EA	1	*	*	*	*	*	*		3	10-7	R246
PAFZZ	5905-190-8873	RESISTOR, FIXED, COMPOSITION RC42GF47K (81349)	R337.....	EA	3	*	*	*	*	*	*		3	10-8	R337
PAFZZ	5905-190-8873	RESISTOR, FIXED, COMPOSITION RC42GF47K (81349)	R330.....	EA	REF	*	*	*	*	*	*		3	10-8	R330
PAFZZ	5905-190-8873	RESISTOR, FIXED, COMPOSITION RC42GF47K (81349)	R404 FIG NO 10-14	EA	REF	*	*	*	*	*	*		3		R404
PAFZZ	5905-279-3496	RESISTOR, FIXED, COMPOSITION RC42GF47K (81349)	R224.....	EA	3	*	*	*	*	*	*		3	10-7	R224
PAFZZ	5905-279-3496	RESISTOR, FIXED, COMPOSITION RC42GF51K (81349)	R225.....	EA	REF	*	*	*	*	*	*		3	10-7	R225
PAFZZ	5905-279-3496	RESISTOR, FIXED, COMPOSITION RC42GF51K (81349)	R356.....	EA	REF	*	*	*	*	*	*		3	10-8	R356
PAFZZ	5905-254-7090	RESISTOR, FIXED, COMPOSITION RC42GF40K (81349)	R312.....	EA	2	*	*	*	*	*	*		3	10-8	R312
PAFZZ	5905-254-7090	RESISTOR, FIXED, COMPOSITION RC42GF40K (81349)	R314.....	EA	REF	*	*	*	*	*	*		3	10-8	R314
PAFZZ	5905-171-1978	RESISTOR, FIXED, COMPOSITION RC42GF104K (81349)	R346.....	EA	10	*	*	*	*	*	*		3	10-8	R346
PAFZZ	5905-171-1978	RESISTOR, FIXED, COMPOSITION RC42GF104K (81349)	R347.....	EA	REF	*	*	*	*	*	*		3	10-8	R347
PAFZZ	5905-171-1978	RESISTOR, FIXED, COMPOSITION RC42GF104K (81349)	R348.....	EA	REF	*	*	*	*	*	*		3	10-8	R348
PAFZZ	5905-171-1978	RESISTOR, FIXED, COMPOSITION RC42GF104K (81349)	R352.....	EA	REF	*	*	*	*	*	*		3	10-8	R352
PAFZZ	5905-171-1978	RESISTOR, FIXED, COMPOSITION RC42GF104K (81349)	R417 FIG NO 10-14	EA	REF	*	*	*	*	*	*		3		R417
PAFZZ	5905-171-1978	RESISTOR, FIXED, COMPOSITION RC42GF104K (81349)	R430 FIG NO 10-14	EA	REF	*	*	*	*	*	*		3		R430
PAFZZ	5905-171-1978	RESISTOR, FIXED, COMPOSITION RC42GF104K (81349)	R434 FIG NO 10-14	EA	REF	*	*	*	*	*	*		3		R434
PAFZZ	5905-171-1978	RESISTOR, FIXED, COMPOSITION RC42GF104K (81349)	R435 FIG NO 10-14	EA	REF	*	*	*	*	*	*		3		R435
PAFZZ	5905-171-1978	RESISTOR, FIXED, COMPOSITION RC42GF104K (81349)	R436 FIG NO 10-14	EA	REF	*	*	*	*	*	*		3		R436
PAFZZ	5905-171-1978	RESISTOR, FIXED, COMPOSITION RC42GF104K (81349)	R437.....	EA	REF	*	*	*	*	*	*		3		R437

SECTION W

(1) SWR CODE	(2) FEDERAL STOCK NUMBER	(3) DESCRIPTION REFERENCE NUMBER & WFR CODE USABLE ON CODE	(4) UNIT OF MEAS	(5) QTY INC IN UNIT	(6) 30-DAY GS MAINT ALLOWANCE			(7) 30-DAY GS MAINT ALLOWANCE			(8) 1-YR MAINT PER EQUIP CENTG	(9) REPORT MAINT PER EQUIP	(10) ILLUSTRATION	
					(a)	(b)	(c)	(a)	(b)	(c)			(a)	(b)
					1-20	21-50	51-100	1-20	21-50	51-100			FIGURE NO	ITEM NO
PAFZZ	5905-171-2008	RESISTOR, FIXED, COMPOSITION R410 FIG NO. 10-14 R410 (01349)	EA	1	*	*	*	*	*	*		3		R410
PAFZZ	5905-871-3339	RESISTOR, FIXED, FILM R359..... R359 (01349)	EA	1	*	*	*	*	*	*		3	10-8	R359
PAFZZ	5905-646-5706	RESISTOR, FIXED, FILM R360..... R360 (01349)	EA	1	*	*	*	*	*	*		3	10-8	R360
PAFZZ	5905-684-2583	RESISTOR, FIXED, FILM R350..... R350 (01349)	EA	1	*	*	*	*	*	*		3	10-8	R350
PAFZZ	5905-539-5644	RESISTOR, FIXED, FILM R327..... R327 (01349)	EA	1	*	*	*	*	*	*		3	10-8	R327
PAFZZ	5905-642-5444	RESISTOR, FIXED, WIRE WOUND R244..... R244 (01349)	EA	1	*	*	*	*	*	*		3	10-7	R244
PAFZZ	5905-802-8708	RESISTOR, FIXED, WIRE WOUND R410 FIG NO. 10-14 R410 (01349)	EA	1	*	*	*	*	*	*		3		R410
PAFZZ	5905-984-4107	RESISTOR, FIXED, WIRE WOUND R429 FIG NO. 10-14 221,000 OHMS FORMSPCT 1/2 W R429 (01349)	EA	1	*	*	*	*	*	*		3		R429
PAFZZ	5905-892-6597	RESISTOR, FIXED, WIRE WOUND R427 FIG NO. 10-19 560,000 OHMS FORMSPCT 1/2 W R427 (01349)	EA	1	*	*	*	*	*	*		3		R427
PAFZZ	5905-827-5903	RESISTOR, FIXED, WIRE WOUND R269..... R269 (01349)	EA	1	*	*	*	*	*	*		3	10-7	R269
PAFZZ	5905-583-5633	RESISTOR, THERMAL RT237 6C,500 OHMS..... FORMSPCT R237 (01349)	EA	1	*	*	*	*	*	*		3	10-7	
PAFZZ	5905-643-5636	RESISTOR, VARIABLE, COMPOSITION R350..... R350 (01349)	EA	1	*	*	*	*	*	*		3	10-8	R350
PAFZZ	5905-556-3350	RESISTOR, VARIABLE, COMPOSITION R353..... R353 (01349)	EA	1	*	*	*	*	*	*		3	10-8	R353
PAFZZ	5905-549-8223	RESISTOR, VARIABLE, COMPOSITION R277 FIG NO. 10-19 R277 (01349)	EA	5	*	*	*	*	*	*		3		R277
PAFZZ	5905-549-8223	RESISTOR, VARIABLE, COMPOSITION R313..... R313 (01349)	EA	REF	*	*	*	*	*	*		3	10-8	R313
PAFZZ	5905-549-8223	RESISTOR, VARIABLE, COMPOSITION R317..... R317 (01349)	EA	REF	*	*	*	*	*	*		3	10-8	R317
PAFZZ	5905-549-8223	RESISTOR, VARIABLE, COMPOSITION R414 FIG NO. 10-14 R414 (01349)	EA	REF	*	*	*	*	*	*		3		R414
PAFZZ	5905-549-8223	RESISTOR, VARIABLE, COMPOSITION R420 FIG NO. 10-14 R420 (01349)	EA	REF	*	*	*	*	*	*		3		R420
PAFZZ	5905-644-6493	RESISTOR, VARIABLE, COMPOSITION R270 FIG NO. 10-19 R270 (01349)	EA	1	*	*	*	*	*	*		3		R270
PAFZZ	5905-556-5122	RESISTOR, VARIABLE, R218..... R218 (01349)	EA	1	*	*	*	*	*	*		3	7-6	R218
PAFZZ	5905-552-5476	RESISTOR, VARIABLE, COMPOSITION R250 FIG NO. 10-19 R250 (01349)	EA	1	*	*	*	*	*	*		3		R250

(1) SWR CODE	(2) FEDERAL STOCK NUMBER	(3) DESCRIPTION REFERENCE NUMBER & MFR CODE USABLE ON CODE	(4) UNIT OF MEAS	(5) QTY IN UNIT	(6) 30-DAY QS MAINT ALLOWANCE			(7) 30-DAY QS MAINT ALLOWANCE			(8) 1-YR PER CENTAGE	(9) DEPOT MAINT PER CENTAGE	(10) HIL LIST RATION	
					(a)	(b)	(c)	(a)	(b)	(c)			(a)	(b)
					1-20	21-50	51-100	1-20	21-50	51-100			FIGURE NO	ITEM NO
PAFZZ	5905-553-2023	RESISTOR, VARIABLE, COMPOSITION R315 FIG NO 10-19 RV44AVSD504A (81349)	EA	3	*	*	*	*	*	*		3		R315
PAFZZ	5905-553-2023	RESISTOR, VARIABLE, COMPOSITION R322----- RV44AVSD504A (81349)	EA	REF	*	*	*	*	*	*		3	10-8	R322
PAFZZ	5905-553-2023	RESISTOR, VARIABLE, COMPOSITION R323----- RV44AVSD504A (81349)	EA	REF	*	*	*	*	*	*		3	10-8	R323
PAFZZ	5905-642-3579	RESISTOR, VARIABLE, COMPOSITION R307----- RV44AVSD504A (81349)	EA	2	*	*	*	*	*	*		3	10-8	R307
PAFZZ	5905-642-3579	RESISTOR, VARIABLE, COMPOSITION R335----- RV44AVSD504A (81349)	EA	REF	*	*	*	*	*	*		3	10-8	R335
PAFZZ	5910-234-2618	RETAINER, CAPACITOR NO-REF-DESIG----- CP06SA1 (81349)	EA	1	*	*	*	*	*	*		2		
PAFZZ	5910-129-6123	RETAINER, CAPACITOR NO-REF-DESIG----- CP06SA3 (81349)	EA	2	*	*	*	*	*	*		2		
PAFZZ	5910-129-6436	RETAINER, CAPACITOR NO-REF-DESIG----- CP06SA4 (81349)	EA	1	*	*	*	*	*	*		2		
PAFZZ	5910-255-0210	RETAINER, CAPACITOR NO-REF-DESIG----- CP07SA3 (81349)	EA	2	*	*	*	*	*	*		2		
PAOZZ	5940-885-5855	RETAINER, ELECTRON TUBE NO-REF-DESIG----- R1448-3021-1 (92071)	EA	3	*	*	*	*	*	*		2		
PAOZZ	5940-852-0486	RETAINER, ELECTRON TUBE NO-REF-DESIG----- R1448-3021-4 (92071)	EA	1	*	*	*	*	*	*		2		
PAFZZ	5961-284-6134	SEMICONDUCTOR DEVICE, DIODE CR301 FIG NO 10-19 IN23C (81349)	EA	1	*	*	*	*	*	*		3		
PAFZZ	5961-503-0242	SEMICONDUCTOR DEVICE, DIODE CR201 FIG NO 10-19 IN69A (81349)	EA	3	*	*	*	*	*	*		3		
PAFZZ	5961-503-0242	SEMICONDUCTOR DEVICE, DIODE CR301 FIG NO 10-19 IN69A (81349)	EA	REF	*	*	*	*	*	*		3		
PAFZZ	5961-503-0242	SEMICONDUCTOR DEVICE, DIODE CR302 FIG NO 10-19 IN69A (81349)	EA	REF	*	*	*	*	*	*		3		
PAFZZ	5961-577-1221	SEMICONDUCTOR DEVICE, DIODE CR101 FIG NO 10-19 IN126A (81349)	EA	1	*	*	*	*	*	*		3		
PAFZZ	5355-850-3045	SHAFT LOCK A302----- R1448-2004 (92071)	EA	13	*	*	*	*	*	*		3		A302
PAFZZ	5935-755-2414	SHIELD, ELECTRICAL CONNECTOR P203 FIG NO 10-16 MS24018-7 (96906)	EA	2	*	*	*	*	*	*		2		P203
PAFZZ	5935-686-5929	SHIELD, ELECTRICAL NO-REF-DESIG----- MS24132R3 (96906)	EA	1	*	*	*	*	*	*		2		
PAFZZ	5933-755-0613	SHIELD, ELECTRICAL NO-REF-DESIG----- MS24132R5 (96906)	EA	1	*	*	*	*	*	*		2		
PAFZZ	5935-725-1990	SHIELD, ELECTRICAL NO-REF-DESIG----- MS24133R1 (96906)	EA	1	*	*	*	*	*	*		2		
PAFZZ	5935-871-0157	SHIELD, ELECTRICAL CONNECTOR NO-REF-DESIG R1448-3048 (92071)	EA	1	*	*	*	*	*	*		2		
PAOZZ	5960-280-8214	SHIELD, ELECTRON TUBE E102----- FS102U02 (81349)	EA	12	*	*	*	*	*	*		2		E102

SECTION V

TM11-6940-205-24P

(1) SWR CODE	(2) FEDERAL STOCK NUMBER	(3) DESCRIPTION REFERENCE NUMBER & MFR. CODE    USABLE ON CODE		(4) UNIT OF MEAS	(5) QTY IN UNIT	(6) 30-DAY MAINT ALLOWANCE			(7) 30-DAY CE MAINT ALLOWANCE			(8) YR EQUIP CATEG	(9) DEPOT MAINT EQUIP	(10) ILLUSTRATION	
						(a)	(b)	(c)	(a)	(b)	(c)			(a)	(b)
						1-20	21-50	51-100	1-20	21-50	51-100			FIGURE NO	ITEM NO
PAQZZ	5960-280-8214	SHIELD, ELECTRON TUBE TS102U02 (01349)	E603	EA	REF	*	*	*	*	*	*		2		E103
PAQZZ	5960-280-8214	SHIELD, ELECTRON TUBE TS102U02 (01349)	E202	EA	REF	*	*	*	*	*	*		2		E202
PAQZZ	5960-280-8214	SHIELD, ELECTRON TUBE TS102U02 (01349)	E205	EA	REF	*	*	*	*	*	*		2		E205
PAQZZ	5960-280-8214	SHIELD, ELECTRON TUBE TS102U02 (01349)	E206	EA	REF	*	*	*	*	*	*		2		E206
PAQZZ	5960-280-8214	SHIELD, ELECTRON TUBE TS102U02 (01349)	E211	EA	REF	*	*	*	*	*	*		2		E211
PAQZZ	5960-280-8214	SHIELD, ELECTRON TUBE TS102U02 (01349)	E301	EA	REF	*	*	*	*	*	*		2		E301
PAQZZ	5960-280-8214	SHIELD, ELECTRON TUBE TS102U02 (01349)	E302	EA	REF	*	*	*	*	*	*		2		E302
PAQZZ	5960-280-8214	SHIELD, ELECTRON TUBE TS102U02 (01349)	E303	EA	REF	*	*	*	*	*	*		2		E303
PAQZZ	5960-280-8214	SHIELD, ELECTRON TUBE TS102U02 (01349)	E305	EA	REF	*	*	*	*	*	*		2		E305
PAQZZ	5960-280-8214	SHIELD, ELECTRON TUBE TS102U02 (01349)	E306	EA	REF	*	*	*	*	*	*		2		E306
PAQZZ	5960-280-8214	SHIELD, ELECTRON TUBE TS102U02 (01349)	E408	EA	REF	*	*	*	*	*	*		2		E408
PAQZZ	5960-646-4615	SHIELD, ELECTRON TUBE TS102U03 (01349)	E101	EA	5	*	*	*	*	*	*		2		E101
PAQZZ	5960-646-4615	SHIELD, ELECTRON TUBE TS102U03 (01349)	E207	EA	REF	*	*	*	*	*	*		2		E207
PAQZZ	5960-646-4615	SHIELD, ELECTRON TUBE TS102U03 (01349)	E209	EA	REF	*	*	*	*	*	*		2		E209
PAQZZ	5960-646-4615	SHIELD, ELECTRON TUBE TS102U03 (01349)	E403	EA	REF	*	*	*	*	*	*		2		E403
PAQZZ	5960-646-4615	SHIELD, ELECTRON TUBE TS102U03 (01349)	E407	EA	REF	*	*	*	*	*	*		2		E407
PAQZZ	5960-264-3004	SHIELD, ELECTRON TUBE TS103U02 (01349)	E203	EA	5	*	*	*	*	*	*		2		E203
PAQZZ	5960-264-3004	SHIELD, ELECTRON TUBE TS103U02 (01349)	E204	EA	REF	*	*	*	*	*	*		2		E204
PAQZZ	5960-264-3004	SHIELD, ELECTRON TUBE TS103U02 (01349)	E208	EA	REF	*	*	*	*	*	*		2		E208
PAQZZ	5960-264-3004	SHIELD, ELECTRON TUBE TS103U02 (01349)	E210	EA	REF	*	*	*	*	*	*		2		E210
PAQZZ	5960-264-3004	SHIELD, ELECTRON TUBE TS103U02 (01349)	E304	EA	REF	*	*	*	*	*	*		2		E304
PAQZZ	5960-519-9834	SHIELD, ELECTRON TUBE TS103U03 (01349)	NO-REF-DIE SIG	EA	1	*	*	*	*	*	*		2		
PAFZZ	5925-260-0517	SOCKET, ELECTRON TUBE TS102P01 (01349)	NO-REF-DIE SIG	EA	3	*	*	*	*	*	*		3		
PAFZZ	5935-260-0516	SOCKET, ELECTRON TUBE TS102P01 (01349)	XV10E	EA	17	*	*	*	*	*	*		3		
PAFZZ	5935-260-0516	SOCKET, ELECTRON TUBE TS102P01 (01349)	XV10Z	EA	REF	*	*	*	*	*	*		3		
PAFZZ	5935-260-0516	SOCKET, ELECTRON TUBE TS102P01 (01349)	XV10J	EA	REF	*	*	*	*	*	*		3		

SECTION V		DESCRIPTION		(6)	(7)	(8)			(9)			(10)	(11)	(12)	
SMR CODE	FEDERAL STOCK NUMBER	REFERENCE NUMBER & MFR. CODE	USABLE QTY CODE	UNIT MEAS	QTY UNIT	30-DAY QS MAINT ALLOWANCE			30-DAY QS MAINT ALLOWANCE			ILNR ALLOCATED EQUIP CATEGORY	QTY MAINT EQUIP	ILLUSTRATION	
						(a)	(b)	(c)	(a)	(b)	(c)			(a)	(b)
PAFZZ	5935-260-0516	SOCKET, ELECTRON TUBE	XV202	EA	REF	*	*	*	*	*	*			3	
PAFZZ	5935-260-2516	SOCKET, ELECTRON TUBE	XV205	EA	REF	*	*	*	*	*	*			3	
PAFZZ	5935-260-0516	SOCKET, ELECTRON TUBE	XV206	EA	REF	*	*	*	*	*	*			3	
PAFZZ	5935-260-0516	SOCKET, ELECTRON TUBE	XV207	EA	REF	*	*	*	*	*	*			3	
PAFZZ	5935-260-0516	SOCKET, ELECTRON TUBE	XV209	EA	REF	*	*	*	*	*	*			3	
PAFZZ	5935-260-0516	SOCKET, ELECTRON TUBE	XV211	EA	REF	*	*	*	*	*	*			3	
PAFZZ	5935-260-0516	SOCKET, ELECTRON TUBE	XV301	EA	REF	*	*	*	*	*	*			3	
PAFZZ	5935-260-0516	SOCKET, ELECTRON TUBE	XV302	EA	REF	*	*	*	*	*	*			3	
PAFZZ	5935-260-0516	SOCKET, ELECTRON TUBE	XV303	EA	REF	*	*	*	*	*	*			3	
PAFZZ	5935-260-0516	SOCKET, ELECTRON TUBE	XV305	EA	REF	*	*	*	*	*	*			3	
PAFZZ	5935-260-0516	SOCKET, ELECTRON TUBE	XV306	EA	REF	*	*	*	*	*	*			3	
PAFZZ	5935-260-0516	SOCKET, ELECTRON TUBE	XV409	EA	REF	*	*	*	*	*	*			3	
PAFZZ	5935-260-0516	SOCKET, ELECTRON TUBE	XV405	EA	REF	*	*	*	*	*	*			3	
PAFZZ	5935-260-0516	SOCKET, ELECTRON TUBE	XV408	EA	REF	*	*	*	*	*	*			3	
PAFZZ	5935-160-1365	SOCKET, ELECTRON TUBE	XV203	EA	REF	*	*	*	*	*	*			3	
PAFZZ	5935-160-1365	SOCKET, ELECTRON TUBE	XV204	EA	REF	*	*	*	*	*	*			3	
PAFZZ	5935-160-1365	SOCKET, ELECTRON TUBE	XV208	EA	REF	*	*	*	*	*	*			3	
PAFZZ	5935-160-1365	SOCKET, ELECTRON TUBE	XV304	EA	REF	*	*	*	*	*	*			3	
PAFZZ	5935-160-1365	SOCKET, ELECTRON TUBE	XV403	EA	REF	*	*	*	*	*	*			3	
PAFZZ	5935-160-1365	SOCKET, ELECTRON TUBE	XV407	EA	REF	*	*	*	*	*	*			3	
PAFZZ	5930-860-5312	SWITCH, ROTARY S301	FIG NO 10-16	EA	U	*	*	*	*	*	*			5	S301
PAFZZ	5930-860-9311	SWITCH, ROTARY S201	FIG NO 10-16	EA	U	*	*	*	*	*	*			5	S201
PAFZZ	5930-860-9311	SWITCH, ROTARY S302	FIG NO 10-16	EA	U	*	*	*	*	*	*			5	S302
PAFZZ	5930-860-9315	SWITCH, ROTARY NO-REF-DESIG		EA	U	*	*	*	*	*	*			5	
PAFZZ	5930-360-9314	SWITCH, ROTARY S303	FIG NO 10-16	EA	U	*	*	*	*	*	*			5	S303

SECTION W

TM11-6940-205-24P

(1) SMR CODE	(2) FEDERAL STOCK NUMBER	(3) DESCRIPTION REFERENCE NUMBER & MFR. CODE USABLE ON CODE	(4) UNIT OF MEAS	(5) QTY INC IN UNIT	(6) 30 DAY ES. MAINT ALLOWANCE			(7) 30 DAY ES. MAINT ALLOWANCE			(8) 1-YR ALL PER 100 EQUIP CONTCY	(9) DEFECT MAINT 100 EQUIP	(10) ILLUSTRATION	
					(a)	(b)	(c)	(a)	(b)	(c)			(a)	(b)
					1-20	21-50	51-100	1-20	21-50	51-100			FIGURE NO.	ITEM NO.
PAFZZ	5930-874-3974	SWITCH, THERMOSTATIC S403 FIG NO 10-19.. R0460-2203 (92071)	EA	1	*	*	*	*	*	*		5		5603
PAFZZ	5930-870-2274	SWITCH, THERMOSTATIC S402 FIG NO 10-19.. R0460-2127 (92071)	EA	1	*	*	*	*	*	*		5		5602
PAFZZ	5950-852-0460	TRANSFORMER, POWER, STEP-UP T402 FIG NO.. 10-12 R0440-2106 (92071)	EA	1	*	*	*	*	*	*		3		T402
PAFZZ	5950-852-0459	TRANSFORMER, POWER, STEP-DOWN AND STEP-UP.. T400 FIG NO 10-12 R0440-2107 (92071)	EA	1	*	*	*	*	*	*		3		T400
PAQZZ	6548-665-5295	GROUP 0002 ANTENNA AS-1057/UL1-F2. 6940-673-5204 ADAPTER, COAXIAL-TO-WAVEGUIDE NO-REF-.... DESIG	EA	1	*	*	*	*	*	*		4		
PAFZZ	6145-170-7837	A102092 (02199) CABLE, RADIO FREQUENCY NO-REF-DESIG..... RG99U (01369)	FF	2	*	*	*	*	*	*		5		
PAQZZ	4786-314-0660	CLAMP, HOSE NO-REF-DESIG 1-1/16 IN TO 2.. IN ID	EA	1	*	*	*	*	*	*		3		
PAFZZ	5935-577-8776	Q5200265 (00004) CONNECTOR, PLUG, ELECTRICAL NO-REF-DESIG.. UG215U (01369)	EA	1	*	*	*	*	*	*		3		
PAFZZ	5935-201-2725	CONNECTOR, RECEPTACLE, ELECTRICAL NO-REF- DESIG UG225U (01369)	EA	1	*	*	*	*	*	*		3		
PAQMD	5935-837-1188	HORN, WAVEGUIDE NO-REF-DESIG..... A132549 (02199)	EA	1	*	*	*	*	*	*		5		
PAQZZ	5970-713-0235	INSERT, INSULATOR NO-REF-DESIG NYLON.... A20422 (02199)	EA	1	*	*	*	*	*	*		5		
PAQZZ	5315-838-7597	PIN, STRAIGHT, HEADLESS NO-REF-DESIG..... NYLON A20423 (02199)	EA	1	*	*	*	*	*	*		5		
PAFZZ	5935-837-7602	REFLECTOR, ANTENNA NO-REF-DESIG..... PARABOLIC DISH TYPE BRACKET MTD C24056 (02199)	EA	1	*	*	*	*	*	*		3		
PAQZZ	5340-837-1755	ROD END, INTERNALLY THREADED NO-REF-DESIG NYLON 2 27/32 IN LG O/A A20000 (02199)	EA	3	*	*	*	*	*	*		3		
PAQZZ	5340-837-1756	ROD END, INTERNALLY THREADED NO-REF-DESIG NYLON 9-17/32 IN LG O/A B26001 (02199)	EA	3	*	*	*	*	*	*		3		
PAQZZ	5305-838-6141	SCREW, EXTERNALLY RELIEVED BODY NO-REF-.. DESIG HORN POST SUPPORT TEFLON AP15556 (02199)	EA	1	*	*	*	*	*	*		5		
PAQZZ	5305-838-6142	SCREW, EXTERNALLY RELIEVED BODY NO-REF-.. DESIG ROD AND HORN SUPPORT NYLON A26733-2 (02199)	EA	3	*	*	*	*	*	*		5		
PAQZZ	5305-838-7610	SETScrew NO-REF-DESIG NYLON..... A27779 (02199)	EA	3	*	*	*	*	*	*		3		
PAQZZ	5935-605-5328	SPREADER, ANTENNA NO-REF-DESIG NYLON.... A20424 (02199)	EA	1	*	*	*	*	*	*		2		
PAQZZ	5305-823-5706	THUMBSCREW NO-REF-DESIG..... CONTINUED	EA	1	*	*	*	*	*	*		5		

SECTION V																
(1)	(2)	(3)		(4)	(5)	(6)			(7)			(8)	(9)	(10)		
SMR CODE	FEDERAL STOCK NUMBER	DESCRIPTION		UNIT OR MEAS	QTY NO UNIT	30 DAY DIS MANTN ALLOWANCE			30 DAY ES MANTN ALLOWANCE			PLANT ID	DISP ID	EQUIPMENT		
		REFERENCE NUMBER & ITR CODE	USABLE QTY CODE			(a)	(b)	(c)	(a)	(b)	(c)			CONTR	GROUP	(a)
		CONTINUED														
		A400000 (421000)														













圖號 頁數

圖號 頁數

圖號 頁數  
圖號 頁數  
圖號 頁數  
圖號 頁數  
圖號 頁數  
圖號 頁數  
圖號 頁數  
圖號 頁數  
圖號 頁數  
圖號 頁數  
圖號 頁數

圖號 頁數  
圖號 頁數  
圖號 頁數  
圖號 頁數  
圖號 頁數  
圖號 頁數  
圖號 頁數  
圖號 頁數  
圖號 頁數  
圖號 頁數  
圖號 頁數

圖號 頁數

圖號 頁數  
圖號 頁數  
圖號 頁數  
圖號 頁數  
圖號 頁數  
圖號 頁數  
圖號 頁數  
圖號 頁數  
圖號 頁數  
圖號 頁數

圖號 頁數  
圖號 頁數  
圖號 頁數  
圖號 頁數  
圖號 頁數  
圖號 頁數  
圖號 頁數  
圖號 頁數  
圖號 頁數  
圖號 頁數  
圖號 頁數

By Order of the Secretary of the Army:

**CREIGHTON W. ABRAMS**  
*General, United States Army*  
*Chief of Staff*

Official:

**VERNE L. BOWERS**  
*Major General, United States Army*  
*The Adjutant General*

**Distribution:**

*Active Army:*

CNGB (1)  
TSG (1)  
ACSC-E (2)  
USAMB (10)  
USAARNBD (1)  
USASA (2)  
TRADOC (2)  
AMC (1)  
NICOM (1)  
TECOM (2)  
ARADCOM (2)  
ARADCOM Rgs (1)  
OS Maj Comd (2)  
USACC (2)  
HISA Ft Monmouth (18)  
Armies (1)  
USAADS (5)  
USASCS (5)  
USASESS (5)  
Sve Colleges (1)

Fort Huachuca (5)  
WSMR (1)  
Fort Carson (5)  
USABERDAA (1)  
USABERDAW (1)  
Army Dep (1) except  
LEAD (10)  
SAAD (30)  
TOAD (14)  
ATAD (10)  
USA Dep (1)  
Sig Sec USA Dep (2)  
Sig Dep (2)  
Sig FLDMS (1)  
Ft Richardson (ECOM Ofc) (1)  
Units org under fol TOE  
(1 copy each):  
11-500 (AA-AC)  
29-134  
29-136

NG: None.

USAR: None.

For explanation of abbreviations used, see AR 310-50.

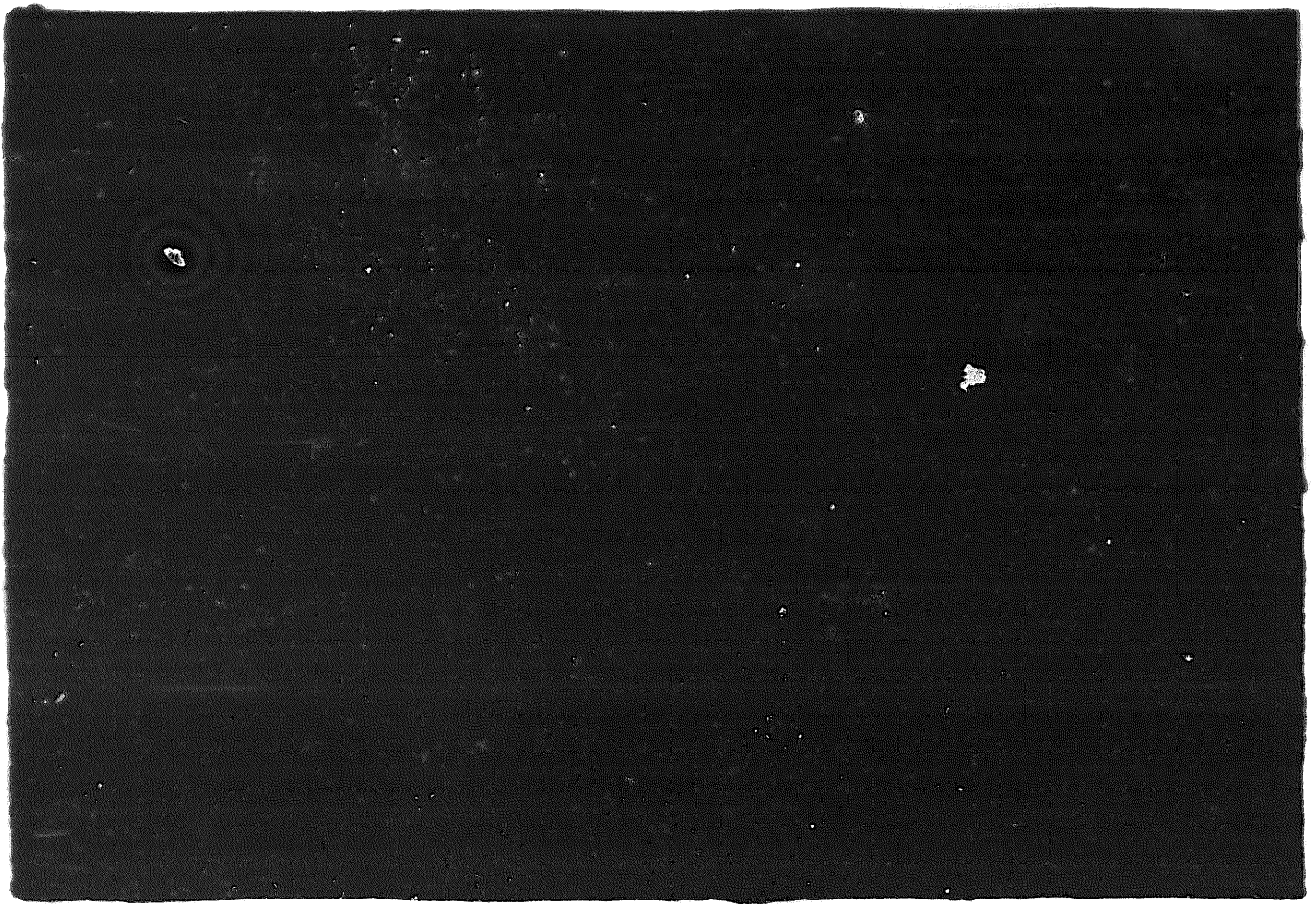
**END**

**01-07-83**

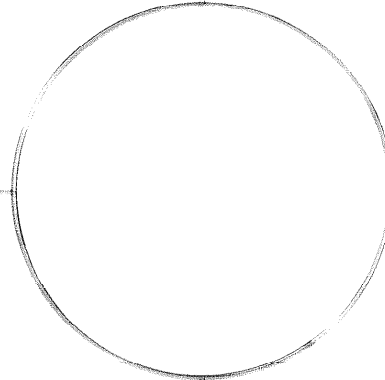
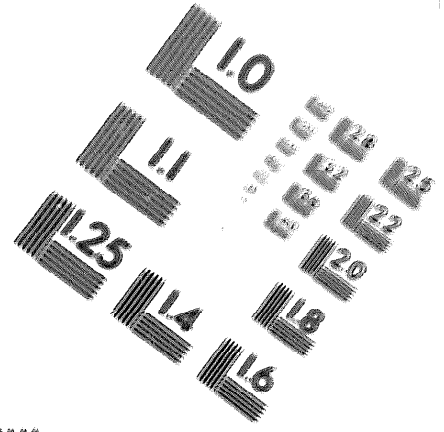
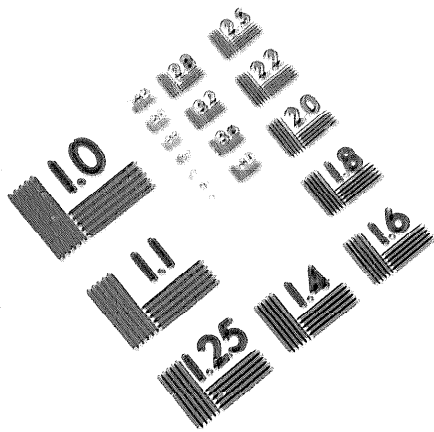
**DATE**







DEPARTMENT OF THE ARMY  
MICROFORM  
TEST TARGET



150 MM

1.0 mm (e= 0.51 mm)

ABCDEFGHIJKLMN OPQRSTU VWXYZ 1234567890  
abcdefghijklmnopqrstuvwxyz \$%&'()\*+,-./:;<=>@

1.5 mm (e= 1.00 mm)

ABCDEFGHIJKLMN OPQRSTU VWXYZ 1234567890  
abcdefghijklmnopqrstuvwxyz \$%&'()\*+,-./:;<=>@

2.0 mm (e= 1.37 mm)

ABCDEFGHIJKLMN OPQRSTU VWXYZ  
abcdefghijklmnopqrstuvwxyz  
1234567890 \$%&'()\*+,-./:;<=>@

2.5 mm (e= 1.77 mm)

ABCDEFGHIJKLMN OPQRSTU VWXYZ  
abcdefghijklmnopqrstuvwxyz  
1234567890 \$%&'()\*+,-./:;<=>@

1.0 mm (e= 0.51 mm)

ABCDEFGHIJKLMN OPQRSTU VWXYZ 1234567890  
abcdefghijklmnopqrstuvwxyz \$%&'()\*+,-./:;<=>@

1.5 mm (e= 1.00 mm)

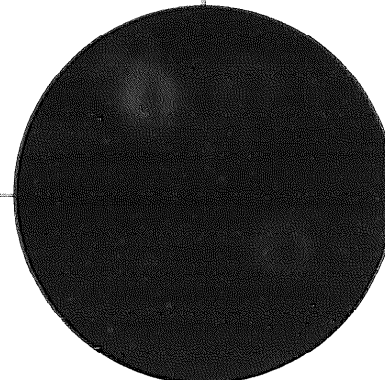
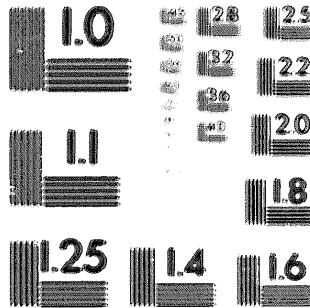
ABCDEFGHIJKLMN OPQRSTU VWXYZ 1234567890  
abcdefghijklmnopqrstuvwxyz \$%&'()\*+,-./:;<=>@

2.0 mm (e= 1.37 mm)

ABCDEFGHIJKLMN OPQRSTU VWXYZ  
abcdefghijklmnopqrstuvwxyz  
1234567890 \$%&'()\*+,-./:;<=>@

2.5 mm (e= 1.77 mm)

ABCDEFGHIJKLMN OPQRSTU VWXYZ  
abcdefghijklmnopqrstuvwxyz  
1234567890 \$%&'()\*+,-./:;<=>@



200 MM

250 MM

